

# European Stroke Organisation (ESO) guidelines on blood pressure management in acute ischaemic stroke and intracerebral haemorrhage

European Stroke Journal  
2021, Vol. 6(2) X48–L89  
© European Stroke Organisation 2021



Article reuse guidelines:  
sagepub.com/journals-permissions  
DOI: 10.1177/23969873211012133  
journals.sagepub.com/home/eso



Else Charlotte Sandset<sup>1,2</sup> , Craig S Anderson<sup>3,4</sup> ,  
Philip M Bath<sup>5</sup>, Hanne Christensen<sup>6</sup>, Urs Fischer<sup>7</sup>,  
Dariusz Gąsecki<sup>8</sup>, Avtar Lal<sup>9</sup>, Lisa S Manning<sup>10</sup>,  
Simona Sacco<sup>11</sup> , Thorsten Steiner<sup>12,13</sup>  and  
Georgios Tsivgoulis<sup>14,15</sup>

## Abstract

The optimal blood pressure (BP) management in acute ischaemic stroke (AIS) and acute intracerebral haemorrhage (ICH) remains controversial. These European Stroke Organisation (ESO) guidelines provide evidence-based recommendations to assist physicians in their clinical decisions regarding BP management in acute stroke. The guidelines were developed according to the ESO standard operating procedure and Grading of Recommendations, Assessment, Development, and Evaluation (GRADE) methodology. The working group identified relevant clinical questions, performed systematic reviews and meta-analyses of the literature, assessed the quality of the available evidence, and made specific recommendations. Expert consensus statements were provided where insufficient evidence was available to provide recommendations based on the GRADE approach. Despite several large randomised-controlled clinical trials, quality of evidence is generally low due to inconsistent results of the effect of blood pressure lowering in AIS. We recommend early and modest blood pressure control (avoiding blood pressure levels >180/105 mm Hg) in AIS patients undergoing reperfusion therapies. There is more high-quality randomised evidence for BP lowering in acute ICH, where intensive blood pressure lowering is recommended rapidly after hospital presentation with the intent to improve recovery by reducing haematoma expansion. These guidelines provide further recommendations on blood pressure thresholds and for specific patient subgroups. There is ongoing uncertainty regarding the most appropriate blood pressure management in AIS and ICH. Future randomised-controlled clinical trials are needed to inform decision making on thresholds, timing and strategy of blood pressure lowering in different acute stroke patient subgroups.

<sup>1</sup>Stroke Unit, Department of Neurology, Oslo University Hospital, Oslo, Norway

<sup>2</sup>The Norwegian Air Ambulance Foundation, Oslo, Norway

<sup>3</sup>The George Institute for Global Health, Faculty of Medicine, University of New South Wales, Sydney, NSW, Australia

<sup>4</sup>The George Institute China at Peking University Health Science Center, Beijing, PR China

<sup>5</sup>Stroke Trials Unit, Division of Clinical Neuroscience, University of Nottingham, Nottingham NG7 2UH, United Kingdom

<sup>6</sup>Department of Neurology, Bispebjerg Hospital & University of Copenhagen, Copenhagen, Denmark

<sup>7</sup>Department of Neurology, Inselspital, Bern University Hospital, University of Bern, Bern, Switzerland

<sup>8</sup>Department of Adult Neurology, Medical University of Gdańsk, Gdańsk, Poland

<sup>9</sup>Methodologist, European Stroke Organisation, Basel, Switzerland

<sup>10</sup>Department of Stroke Medicine, University Hospitals of Leicester NHS Trust, Leicester, United Kingdom

<sup>11</sup>Department of Biotechnological and Applied Clinical Sciences, University of L'Aquila, Italy

<sup>12</sup>Department of Neurology, Frankfurt Hoechst Hospital, Frankfurt, Germany

<sup>13</sup>Department of Neurology, Heidelberg University Hospital, Heidelberg, Germany

<sup>14</sup>Second Department of Neurology, Attikon University Hospital, School of Medicine, National and Kapodistrian University of Athens, Athens, Greece

<sup>15</sup>Department of Neurology, University of Tennessee Health Science Center, Memphis, Tennessee, USA

## Corresponding author:

Else Charlotte Sandset, Stroke Unit, Department of Neurology, Oslo University Hospital, Ullevål 4950, Postboks Nydalen, Oslo 0424, Norway.  
Email: Else@sandset.net

## Keywords

ischaemic stroke, intracerebral haemorrhage, blood pressure, hypertension, guidelines, recommendations, antihypertensive, blood pressure lowering

Date received: 5 March 2021; accepted: 5 April 2021

## Introduction

Elevated blood pressure levels (systolic blood pressure  $\geq 140$  mm Hg and/or diastolic blood pressure  $\geq 90$  mm Hg) are common in patients with acute ischaemic stroke (AIS) and acute intracerebral haemorrhage (ICH), but the pathophysiology of the hypertensive response is poorly understood.<sup>1</sup> Despite considerable research effort, the optimal post-stroke blood pressure management in these conditions remains controversial and unresolved. As randomised-controlled clinical trials (RCTs) of this topic are limited and challenging, clinical decisions are often made on the basis of observational studies that are prone to bias, confounding and random error.<sup>2–5</sup> Theoretical concepts and pathophysiological arguments are used to defend arguments for and against alteration of blood pressure in the setting of acute stroke; to reduce the risk of stroke recurrence, cerebral oedema, reperfusion haemorrhage for AIS patients after reperfusion therapies, and reduce haematoma expansion and cerebral oedema in ICH; to avoid impairment of cerebral perfusion to viable ischaemic tissue in the presence of altered autoregulation.<sup>6,7</sup> Whilst most attention has been focused on the avoidance of hypertension, drug-induced hypertension has been proposed as a potential therapeutic strategy to increase cerebral perfusion in some AIS patients.<sup>8</sup>

Although numerous observational studies have shown that both extremely low and high blood pressure levels are associated with worse outcomes in AIS and ICH patients,<sup>9–12</sup> there has been inconsistency in results from multiple RCTs of different antihypertensive strategies for acute stroke subtypes.

Here, we update previous guidelines from the European Stroke Organisation (ESO) on the management of acute blood pressure in AIS<sup>13</sup> and ICH,<sup>14</sup> this including new RCTs and individual patient data meta-analyses (IPDM) that have been published since 2008<sup>13</sup> and 2014<sup>14</sup> respectively. We review current evidence and provide recommendations for blood pressure management (both blood pressure reduction and augmentation) in patients with acute stroke; including recommendations for blood pressure management in the pre-hospital setting, according to eligibility for reperfusion treatment in AIS and separately for patients with acute ICH. Our goal was to facilitate

decision-making in these patient groups where there is considerable ongoing uncertainty over optimal post-stroke blood pressure management.

## Methods

This guideline was initiated by the ESO and prepared according to ESO standard operating procedures,<sup>15</sup> which are based on the Grading of Recommendations, Assessment, Development and Evaluations (GRADE) system.<sup>16</sup> The ESO Guidelines Board and Executive Committee reviewed the intellectual and financial disclosures of the module working group (MWG) members (Table 1) and approved the composition of the group, which was co-chaired by the first (ECS) and last (GT) authors.

The MWG undertook the following steps:

1. Produced a list of topics of clinical interest to Guideline users that were agreed by all MWG members, without reference to blood pressure management for secondary stroke prevention, in patients with transient ischaemic attack (TIA), and in children with acute stroke.
2. Eight Patient Intervention Comparator Outcome (PICO) were developed and agreed upon within the MWG following a teleconference and e-mail correspondence.
3. Produced a list of relevant outcomes for which the MWG used the Delphi method to score their importance (mean score from 10 respondents on a scale of 1 to 9).

The list of outcomes in the AIS subgroup were:

- Mortality (90 days or end of follow-up) Mean score: 8.8/9
- Functional outcome (90 days or the end of follow-up) Mean score: 8.8/9
- Recurrent ischaemic stroke Mean score: 7.0/9
- Symptomatic ICH Mean score: 6.9/9
- Quality of life (90 days) Mean score: 6.4/9
- Neurological deterioration Mean score 5.5/9 (48 hours)
- Acute kidney injury Mean score 4.0/9

**Table 1.** Disclosures of the working group members.

Author	Discipline and affiliation	Intellectual and financial disclosures
Else Charlotte Sandset	Neurologist, Stroke Unit, Department of Neurology, Oslo University Hospital, Oslo, Norway Senior Researcher, The Norwegian Air Ambulance, Oslo, Norway	Intellectual disclosures: Trial Manager of the SCAST trial International Advisory Board of the RIGHT2 trial International Advisory Board of the INTERACT4 trial Secretary General of the European Stroke Organisation Financial disclosures: None
Craig S. Anderson	Professor of Neurology The George Institute for Global Health, Faculty of Medicine, University of New South Wales, Sydney, NSW, Australia Executive Director The George Institute China at Peking University Health Science Center, Beijing, PR China	Intellectual disclosures: Principle Investigator for INTERACT, ENCHANTED and TRIDENT studies Financial disclosures: Research grants from Takeda China
Philip M. Bath,	Stroke Physician, Stroke Trials Unit, Division Clinical Neuroscience, University of Nottingham, Nottingham NG7 2UH UK	Intellectual disclosures: CI ENOS, RIGHT, RIGHT-2 Member Trial Steering Committees/Advisory Committees: SCAST, INTERACT-1/2, ENCHANTED Financial disclosures: Member advisory Boards - DiaMedica, Moleac, Phagenesis (none relevant to this topic)
Hanne Christensen	Professor of Neurology and Consultant Neurologist Department of Neurology, Bispebjerg Hospital & University of Copenhagen, Copenhagen, Denmark.	Intellectual disclosures: Member Trial Steering Committee ENOS Financial disclosures: Speaker honoraria: Bayer, Daiichi-Sankyo, BMS og Boehringer. National Coordinating Investigator: Portola and Bayer
Urs Fischer	Prof. for Acute Neurology and Stroke; Co-Chairman Stroke Centre Bern Deputy-Director Clinical Trial Unit Bern University of Bern Switzerland	Intellectual disclosures: Steering Committee Member of the TRIDENT trial Financial disclosures: Consultant for Medtronic, Stryker and CSL Behring (none relevant for this topic)
Dariusz Gąsecki	Neurologist, Stroke Unit, Department of Adult Neurology, Medical Univeristy of Gdańsk, Gdańsk, Poland	Intellectual disclosures: Trial Participant of the SCAST trial Past-President of the European Society of Hypertension Working Group on Hypertension and the Brain Financial disclosures:none
Avtar Lal	Guidelines Methodologist, European Stroke Organisation, Basel, Switzerland	Intellectual disclosures: None Financial disclosures: None
Lisa S. Manning	Stroke Physician, Department of Stroke Medicine, University Hospitals of Leicester NHS Trust, UK	Intellectual disclosures: None Financial disclosures: None
Simona Sacco	Neurologist Department of Biotechnological and Applied Clinical Sciences and Biotechnology, University of L'Aquila, Italy	Intellectual disclosures: Co-chair of the Guideline Board of the European Stroke Organization Financial disclosures: Personal fees as speaker or advisor: Abbott, Allergan, AstraZeneca, Eli Lilly, Novartis, Teva. Research grants: Allergan, Novartis.

(continued)

**Table 1.** Continued.

Author	Discipline and affiliation	Intellectual and financial disclosures
Thorsten Steiner	Neurologist, Neurointensivist, Department of Neurology, Frankfurt Hoechst Hospital, Frankfurt, Germany Scientific co-worker, lecturer, Department of Neurology, Heidelberg University Hospital, Heidelberg, Germany	Non-financial support: Abbott, Allergan, Bayer, Bristol-Myers Squibb, Daiichi-Sankyo, Eli Lilly, Medtronic, Novartis, Pfizer, Starmed, Teva. Fees for CME/education: Medscape Intellectual disclosures: ATACH-2, Financial disclosures: Personal fees: Bayer, Boehringer, BMS-Pfizer, Daiichy Sankyo, Alexion
Georgios Tsivgoulis	Professor of Neurology, 'Attikon' University Hospital, Second Department of Neurology, School of Medicine, National and Kapodistrian University of Athens, Athens, Greece & Department of Neurology, University of Tennessee Health Science Center, Memphis, Tennessee, USA	Intellectual disclosures: - Section Editor: "Stroke" journal - Associate Editor: "Therapeutics advances in Neurological Disorders" journal - Chair of European Stroke Organization Industry Roundtable Financial disclosures: - Participation in advisory meetings & satellite symposia for Boehringer-Ingelheim; Novartis, Sanofi, Biogen, Genesis Pharma, Teva, Merck-Serono, Bayer, Daichii-Sankyo, Allergan, Specifar, Actavis, Shire, Medtronic, CSL Behring, Abbvie, Abbott, Takeda, Biomarin. - Unrestricted research grants from Novartis, Genesis Pharma, Teva, Shire, Merck-Serono, Medtronic, Boehringer-Ingelheim, Allergan, Abbott

The list of outcomes in ICH subgroup were:

• Mortality (90 days or end of follow-up)	Mean score: 8.9/9
• Functional outcome (90 days or end of follow-up)	Mean score: 8.9/9
• Haematoma expansion	Mean score: 6.9/9
• Quality of life (90 days)	Mean score: 5.4/9
• Neurological deterioration (48 hours)	Mean score 6.4/9
• Incident ischaemic stroke	Mean score: 5.4/9
• Recurrent ICH	Mean score: 5.2/9
• Acute kidney injury	Mean score 4.2/9

Based on voting scores, functional outcome and mortality were allocated highest priority for both AIS and ICH and were the only outcomes considered in the meta-analyses. The outcome of recurrent ischaemic stroke was also of interest in the AIS subgroup, while haematoma expansion was the outcome considered important in the ICH subgroup. Unless specified

otherwise, 'excellent' and 'good' outcome were defined as 3-month modified Rankin Scale (mRS) scores of 0–1 and 0–2, respectively. Unless specified otherwise, 'any better' functional outcome corresponded to an ordinal shift analysis of the mRS score at 3 months. For the subgroup of patients with suspected stroke in the pre-hospital setting we used the outcomes favoured in the AIS subgroup since the aetiology in the majority (≈80%-85%) of these patients is ischaemic. The MWG formulated a list of PICO questions according to the ESO Guideline SOP, which were reviewed and subsequently approved by the ESO Guidelines Board and Executive Committee.

4. The main recommendations were based on a systematic review of RCTs evaluating different blood pressure management strategies in AIS and ICH patients. The literature search was completed on September 30, 2020. We conducted a systematic review in all PICOs resulting in 35 different sets of analyses. Details regarding the search strategies

are provided in the Supplement. We also included relevant literature published to February 27, 2021 in the final manuscript.

5. For each PICO question, a group consisting of three to four MWG members was formed.
6. MWG members assigned to each PICO independently screened the titles and abstracts of the publications identified by the electronic search and assessed the full text of potentially relevant RCTs. Where there were no RCT data available for a certain topic, systematic reviews of non-randomised studies or key observational studies were identified and considered.
7. Where appropriate, a random-effects meta-analysis was conducted using Stata software version 11.0 (Statacorp), with results summarised as odds ratios (ORs) and 95% confidence interval (CI). Any heterogeneity across studies was assessed using the  $I^2$  statistic, and heterogeneity was classified as moderate ( $I^2 \geq 30\%$ ), substantial ( $I^2 \geq 50\%$ ), or considerable ( $I^2 \geq 75\%$ ).<sup>17</sup> The Cochrane Collaboration risk of bias tool was used for the risk of bias assessment.
8. The results of data analysis were imported into the GRADEpro Guideline Development Tool (McMaster University, 2015; developed by Evidence Prime, Inc.). For each PICO question and each outcome, the risk of bias was assessed and quality of evidence rated as high, moderate, low or very low based on the type of available evidence (randomised or observational studies) and considerations on inconsistency of results, indirectness of evidence, imprecision of results, and risk of bias.<sup>15,16</sup> GRADE evidence profiles/summary of findings tables were generated using GRADEPro.
9. Each PICO group addressed their respective question by providing distinct sections. First, *Analysis of current evidence* summarised current pathophysiological considerations and relative recommendations from other scientific societies related to that specific question, followed by a summary and discussion of the results of the identified RCTs. Where there was no RCT, the paragraph described the results of systematic reviews of non-randomised studies. Second, *Additional information* was added when more details on RCTs referred to in the first section were needed, to summarise results of observational studies, or to provide information on key subgroup analyses of the included RCTs and on ongoing or future RCTs. Third, *Evidence-based Recommendations* were provided, these based on the GRADE methodology. The direction, strength and formulation of the recommendation were determined according to the GRADE evidence profiles and the ESO-SOP.<sup>15,16,18</sup> These

recommendations do not apply to planned or ongoing trials. Finally, according to the first addendum to the ESO SOP, *Expert Consensus Statements* were added whenever the PICO group considered that there was insufficient evidence available to provide *Evidence-based Recommendations* where practical guidance is needed for routine clinical practice. In that case, a pragmatic suggestion was provided, with the results of the votes of all MWG members (apart from AL, a methodologist who contributed in literature search and data analysis) on this proposal. Importantly, the suggestions provided in this paragraph should not be mistaken as evidence-based recommendations but rather as the opinion of the MWG members.

10. The Guideline document was subsequently reviewed several times by all MWG members and revised until a consensus was reached. Finally, the Guideline document was reviewed and approved by external reviewers and members of the ESO Guidelines Board and Executive Committee.

## Results

*In patients with suspected acute stroke, does pre-hospital blood pressure lowering with any vasodepressor drug compared to no drug improve outcome?*

### *Analysis of current evidence*

High blood pressure in patients with suspect stroke in the ambulance is common, and blood pressure may vary according to stroke subtype.<sup>19</sup> High blood pressure is associated with poor short- and long-term functional outcome both patients with AIS and ICH. Treatment-resistant very high blood pressure (>185/110 mm Hg) is a contraindication to intravenous thrombolysis (IVT),<sup>20</sup> whereas blood pressure lowering in acute ICH has been associated with improved functional outcome and reduced haematoma expansion.<sup>21,22</sup> Blood pressure management is a relatively low-cost treatment option feasible in the pre-hospital setting, and may contribute to improved outcomes in patients with suspected stroke.<sup>23</sup> Current ESO and European Academy of Neurology (EAN) guidelines do not recommend blood pressure lowering in the pre-hospital setting<sup>24</sup> and the American Heart Association (AHA)/American Stroke Association (ASA) have no specific recommendations for blood pressure management for patients with suspected stroke in this setting.<sup>25</sup>



The Rapid Intervention with Glyceryl Trinitrate in Hypertensive Stroke trial (RIGHT) randomised 41 patients with suspected stroke (Face Arm Speech Test score of 2 or 3) and systolic blood pressure  $\geq 140$  mm Hg within 4 hours of symptom onset. The intervention, transdermal glyceryl trinitrate (GTN), was administered in the ambulance by trained paramedics. At 90 days, there was a significant improvement in the mRS with a shift of 1 point in favour of treatment with GTN ( $p=0.04$ ), but no significant difference in mortality (GTN 4/25 vs no GTN 6/16,  $p=0.15$ ).<sup>26</sup>

The RIGHT-2 trial recruited 1149 patients with suspected stroke (Fast Arm Speech Test scores 2 or 3) and systolic blood pressure  $\geq 120$  mm Hg) within 4 hours of symptom onset, according to a similar intervention as the pilot trial. There were no differences in mRS scores (mRS  $> 2$ ) in patients with a final diagnosis of stroke (GTN 286/434 [68%] vs no GTN 282/418 [69%];  $p=0.55$ ) nor in all included patients (GTN 358/568 [66%] vs no GTN 373/581 [67%];  $p=0.88$ ), nor in mortality.<sup>27</sup>

Two trials were included in a meta-analysis for the outcome of death at three months,<sup>26,27</sup> with no difference detected between any vasodepressor drug compared to control (OR 0.74, 95%CI: 0.23 – 2.35  $p=0.61$ ,  $I^2=63\%$ ) (Figure 1). There were also no difference in the endpoint of good functional outcome (mRS 0–2 versus 3–6) between any vasodepressor drug compared to control (OR 1.33, 95%CI: 0.59 – 3.01,  $p=0.49$ ,  $I^2=46\%$ ) (Figure 2).

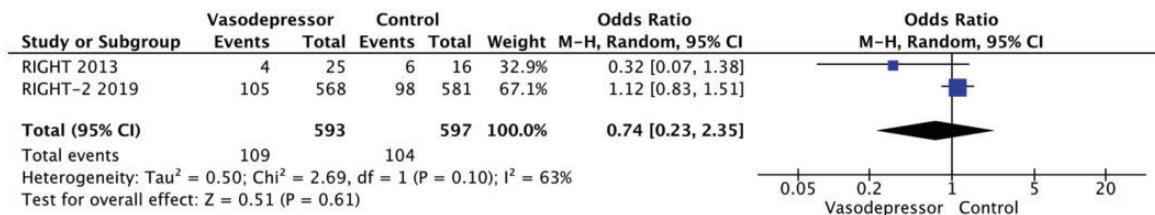
Table 2 provides details regarding the safety and efficacy of any vasodepressor drug compared with no vasodepressor drug in patients with suspected stroke in the pre-hospital setting.

### Additional information

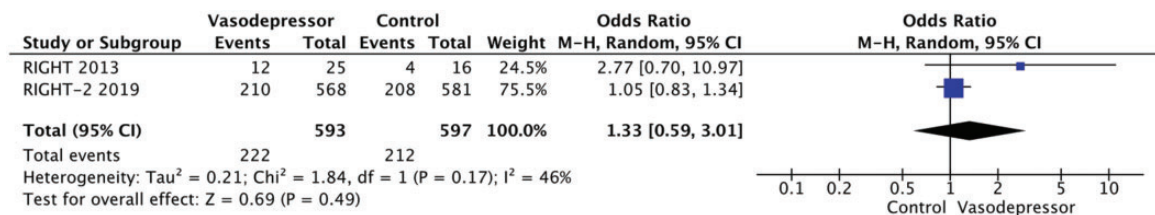
The Field Administration of Stroke Therapy-Magnesium (FAST-MAG) randomised 1700 patients in the ambulance with suspected stroke to intravenous magnesium or placebo within 2 hours of symptom onset. The trial evaluated the potential neuroprotective effect of magnesium, which also has mild vasoactive activities. There were no differences between the two groups in the rates of good functional outcome (mRS scores 0-2) at 3 months (magnesium 449/857 [52%] vs placebo 445/843 [53%];  $p=0.88$ ) nor in mortality (magnesium 132/857 [15%] vs placebo 131/843 [16%];  $p=0.95$ ).<sup>28</sup>

The Paramedic Initiated Lisinopril for Acute Stroke Treatment (PIL-FAST) trial randomised 14 patients with unilateral arm weakness, systolic blood pressure  $\geq 160$  mm Hg within 3 hours of symptom onset to sublingual lisinopril or control. Blood pressure was lower in the lisinopril group on hospital admission. There was no difference in 1-week mortality between the two groups (lisinopril 1/6 [17%] vs placebo 1/8 [13%]).<sup>23</sup> Since the trial did not report mortality beyond 1 week, we did not include the trial in the meta-analysis.

In the subgroup of 145 patients included in the RIGHT-2 trial with confirmed ICH after admission



**Figure 1.** Effect of pre-hospital blood pressure lowering by any vasopressor drug compared to no drug on mortality at three months following symptom onset.



**Figure 2.** Effect of pre-hospital blood pressure lowering by any vasopressor drug compared to no drug on good functional outcome (mRS scores 0–2) at three months following symptom onset.

**Table 2.** Evidence profile table for pre-hospital blood pressure lowering with any vasodepressor drug compared to no drug in patients with suspected stroke.

Certainty assessment		№ of patients		Effect								
№ of studies	Study design	Risk of bias	Inconsistency	Indirectness	Imprecision	Other considerations	PICO 1:		Relative (95% CI)	Absolute (95% CI)	Certainty	Importance
							Pre-hospital blood pressure lowering	control				
3 months mortality												
2	Randomised trials	Not serious	Not serious	Not serious	Very serious <sup>a</sup>	Publication bias strongly suspected <sup>b</sup>	109/593 (18.4%)	104/597 (17.4%)	OR 0.74 (0.23 to 2.35)	39 fewer per 1,000 (from 128 fewer to 157 more)	⊕○○○ Very low	Critical
3 months good functional outcome (mRS scores 0–2)												
2	Randomised trials	Not serious	Not serious	Not serious	Very serious <sup>a</sup>	Publication bias strongly suspected <sup>b</sup>	222/593 (37.4%)	212/597 (35.5%)	OR 1.33 (0.59 to 3.01)	68 More per 1,000 (from 110 fewer to 269 more)	⊕○○○ Very low	Critical

CI: confidence interval; OR: odds ratio.  
<sup>a</sup>Very wide confidence intervals.  
<sup>b</sup>Two studies reported this outcome.

to hospital, GTN was associated with a worse shift in the mRS scores (adjusted common OR 1.87, 95%CI 0.98–3.57; p=0.058). There was no difference in death at days 4 or 90.<sup>29</sup> Prehospital blood pressure lowering in the ambulance in patients with suspected stroke is currently being tested in two RCTs.<sup>30,31</sup>

**Recommendation**

In patients with suspected stroke we suggest against routine blood pressure lowering in the pre-hospital setting.  
 Quality of evidence: **Moderate** ⊕⊕⊕  
 Strength of recommendation: **Weak** ↓?

**Expert consensus statement**

Due to the potential harm in patients with intracerebral haemorrhage prehospital treatment with glyceryl trinitrate should be avoided. Vote 9 of 10.

**In hospitalised patients with acute ischaemic stroke not treated with reperfusion therapies (intravenous thrombolysis or mechanical thrombectomy), does blood pressure lowering with any vasodepressor drug compared to no drug improve outcome?**

*Analysis of current evidence*

Only a minority of patients with AIS receive reperfusion therapy (intravenous alteplase) in Europe: the percentage ranges from 1% to 20% (mean 7.3%), with even less receiving mechanical thrombectomy (MT) (mean 1.9%).<sup>32</sup> Based on pathophysiology, optimal blood pressure management may be different in patients who are not eligible for reperfusion treatment with either IVT or MT; lowering blood pressure may reduce the risk of haemorrhagic transformation and oedema, whereas high blood pressure may protect the brain by maintaining cerebral perfusion when autoregulation is partially impaired. Current European<sup>13</sup> and AHA/ASA<sup>25</sup> guidelines suggest a cautious approach to hypertension management in those with AIS not eligible for IVT or MT, recommending against aggressive blood pressure lowering in most patients during the initial 24 hours unless blood pressure levels are extreme, or there is a concomitant specific situation that necessitated rapid lowering.

Data from 18 RCTs were considered in the analysis of the effect of blood pressure lowering treatment on death and/or disability.<sup>27,33–50,51,52</sup> Seven included patients with ICH but reported results separately for ICH and AIS subgroups.<sup>27,37,44,45,47,50,51,52</sup> One trial did not discriminate between AIS and ICH<sup>34</sup> but was included based on the assumption that AIS contributed to the majority of patients. Three trials included patients who received IVT, but the proportion receiving IVT was low, and the results were available separately for subgroups according to IVT either in the main paper, or in subsequent post hoc analyses.<sup>27,37,45</sup> Notably, the majority of studies excluded patients with extremely high systolic blood pressure levels (>220 mm Hg) and many included patients up to 72 hours of symptom onset.

Most of the patients were recruited from the three RCTs described below:

The Scandinavian Candesartan Acute Stroke Trial (SCAST) recruited 2029 patients with AIS (n = 1733) and ICH (n = 274) and systolic blood pressure  $\geq 140$  mm Hg within 30 hours of onset and compared treatment with candesartan for seven days with placebo on co-primary end points at six months.<sup>45</sup> Eight percent of patients with AIS received IVT. Blood pressure was lower in the treatment group at day 7 (–5/–2 mm Hg difference in systolic and diastolic blood pressures). There were neutral effects on the two co-primary endpoints: 1) poor functional outcome at six months (ordinal shift on mRS) and 2) composite outcome of vascular death, myocardial infarction or stroke during the six months follow-up period. There were no significant differences between the candesartan and placebo groups in mortality, functional outcome or recurrent ischaemic stroke in the subgroup of 1733 patient with AIS.<sup>52</sup>

The Efficacy of Nitric Oxide in Stroke trial (ENOS) randomised 4011 patients with AIS (n = 3342), including 225 who received IVT, or ICH (n = 629) and systolic blood pressure 140–220 mm Hg to transdermal GTN patches (5 mg) or placebo within 48 hours of onset for 7 days.<sup>37</sup> In a partial factorial design, those on pre-existing anti-hypertensive drugs were randomised to stop or continue their medication. Blood pressure was significantly lower in the GTN treatment group at 24 hours (–7/–3 mm Hg difference) but there was no significant difference after day 3. In the overall patient population (AIS and ICH combined) the primary outcome (worse outcome on mRS scores at 90 days, shift analysis) was neutral for GTN versus placebo (adjusted common OR 1.01, 95% CI 0.91 to 1.13,  $p = 0.83$ ), with no significant interaction between stroke type (AIS versus ICH) and effect of treatment on outcome in a pre-specified subgroup analysis.

The China Antihypertensive Trial in Acute Ischaemic Stroke (CATIS) recruited 4071 patients with AIS (not treated with IVT) and a systolic blood pressure ranging between 140–220 mm Hg within 48 hours of symptom onset.<sup>35</sup> The study compared targeted blood pressure lowering (10 to 25% systolic blood pressure reduction in 24 hours) with either intravenous angiotensin receptor inhibitors (ACEi) (first line), oral calcium channel antagonists (CCB) (second line), or oral diuretics to control. Mean systolic blood pressure was lower in the treatment group (–9.1 mm Hg at 24 hours). There was no significant effect on functional outcome (mRS  $\geq 3$ ) at 14 days or at 90 days.

All the other included studies reported similarly neutral results.

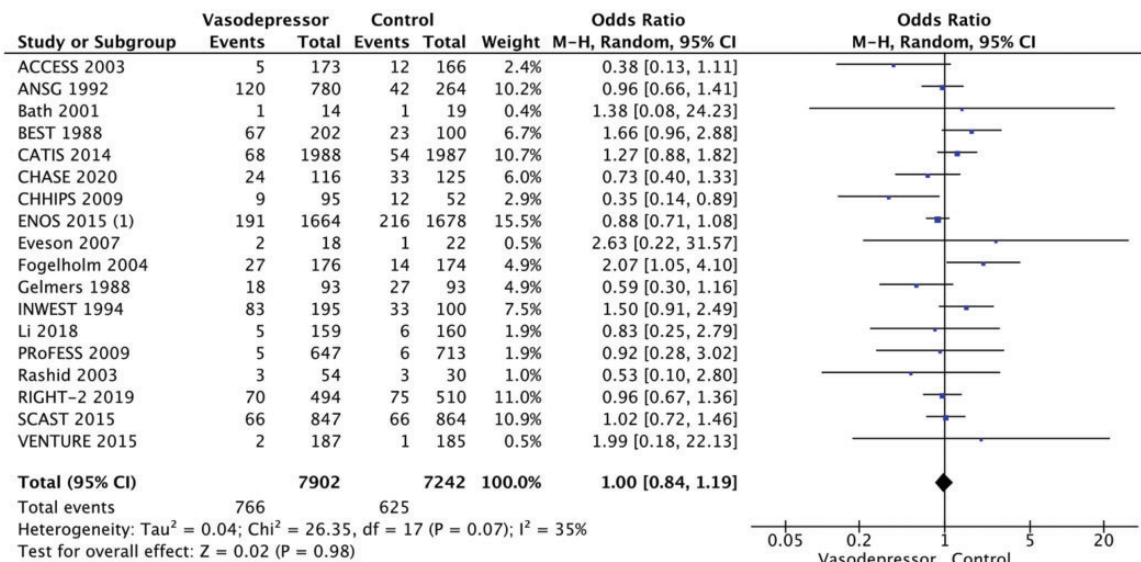
In analyses of RIGHT-2 limited to 580 patients with AIS, there was no evidence of an effect of GTN on functional outcome at 90 days compared with sham (worse outcome on mRS scores at 90 days, shift analysis); adjusted common OR (1.15 [0.85–1.54];  $p = 0.36$ ).<sup>27</sup>

A post hoc subgroup analysis of the Prevention Regime for Effectively Avoiding Second Strokes (PRoFESS) trial examined the effect of adding the angiotensin receptor blocker telmisartan versus placebo to standard antihypertensive treatment in 1360 patients with mild AIS within 72 hours of onset. Telmisartan produced a modest lowering of blood pressure, without increase in adverse events, but there was no effect on poor functional outcome, mortality, stroke recurrence or cardiovascular events. Again, the cohort had mild neurological severity (median National Institutes of Health Stroke Scale (NIHSS) score 3), and treatment initiated rather late (average 58 hours after symptom onset).<sup>43</sup>

In a comparison of amlodipine or irbesartan versus control in 320 AIS patients < 48 hours of onset, the results for effect on poor functional outcome (mRS  $\geq 3$ ) favoured treatment (32.1% in treatment group versus 45.0% in control group,  $p = 0.018$ ).<sup>42</sup> Conversely, Intravenous Nimodipine West European Stroke Trial (INWEST), comparing the effect of nimodipine (1 or 2 mg IV for 5 days then 120 mg orally) to placebo in 265 AIS patients reported poorer functional (according to Barthel Index) and neurological outcomes (according to the Orgogozo scales) in the 2 mg treatment group versus placebo at 21 days (primary efficacy time point) and at 24 weeks.<sup>40</sup>

Eighteen trials were included in the meta-analysis for the effect of blood pressure lowering on mortality at 3–6 months following symptom onset.<sup>27,33–40,42–50,52, 53</sup> No statistically significant effect was found; OR 1.00 (95% CI: 0.84–1.19),  $p = 0.98$ ,  $I^2 = 35\%$  (Figure 3). Twelve studies were included in the meta-analysis for the

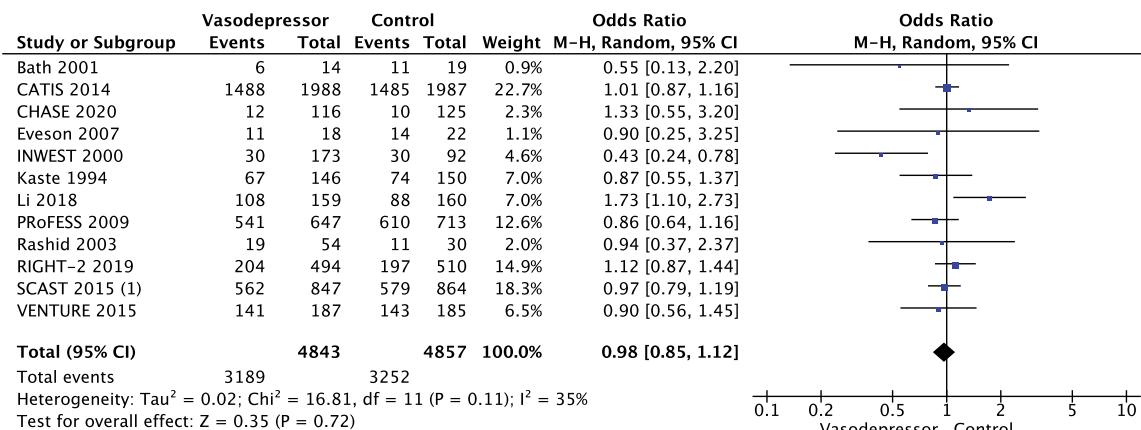




**Footnotes**

(1) Not treated with tPA: ~90%

**Figure 3.** The effect of blood pressure lowering with any vasodepressor drug compared with no drug on mortality at three to six months following symptom onset in patients with acute ischaemic stroke not treated with reperfusion therapies.



**Footnotes**

(1) Not treated with tPA: ~85%

**Figure 4.** The effect of blood pressure lowering with any vasodepressor drug compared with no drug on good functional outcome (mRS scores 0–2) at three to six months following symptom onset in patients with acute ischaemic stroke not treated with reperfusion therapies.

effect of blood pressure lowering on improved functional outcome (mRS scores 0 to 2 at three to six months following symptom onset; Figure 4). There was no statistically significant difference between the use of any vasodepressor drug compared with control: (OR 0.98 95%CI: 0.85–1.12, p = 0.72, I<sup>2</sup> = 35%).<sup>27,35,38,41-47,50,53</sup>

Table 3 provides details regarding the safety and efficacy of any vasodepressor drug compared with no

vasodepressor drug in patients with AIS not treated with reperfusion therapies (IVT and/or MT).

**Additional information**

We hypothesise that factors other than blood pressure may influence the treatment effect on outcomes, these including drug class, blood pressure target, timing of

**Table 3.** Evidence profile table for blood pressure lowering with any vasodepressor drug compared to no drug in patients with acute ischaemic stroke not treated with reperfusion therapies.

Certainty assessment		No. of patients				Effect			Importance			
No. of studies	Study design	Risk of bias	Inconsistency	Indirectness	Imprecision	Other considerations	Blood pressure lowering with Vasodepressor	Control		Relative (95% CI)	Absolute (95% CI)	Certainty
PICO 3												
3-6 months mortality												
18	Randomised trials	Not serious	Not serious	Not serious	Serious <sup>a</sup>	None	766/7902 (9.7%)	625/7242 (8.6%)	OR 1.00 (0.84 to 1.19)	0 Fewer per 1,000 (from 13 fewer to 15 more)	⊕⊕⊕○ Moderate	Critical
3-6 months good functional outcome (mRS scores 0-2)												
12	Randomised trials	Not serious	Not serious	Not serious	Serious <sup>a</sup>	None	3189/4843 (65.8%)	3252/4857 (67.0%)	OR 0.98 (0.85 to 1.12)	4 Fewer per 1,000 (from 37 fewer to 25 more)	⊕⊕⊕○ Moderate	Critical

CI: confidence interval; OR: odds ratio.  
<sup>a</sup>Wide confidence intervals.

treatment, underlying stroke aetiology, premorbid blood pressure levels, and magnitude and rate of blood pressure lowering. Data from the included studies regarding these variables are conflicting. When considering drug class: ACEi appear safe but did not influence outcomes;<sup>35,51</sup> RCTs using ARBs for blood pressure reduction report conflicting results.<sup>45,46,48</sup> Candesartan showed promising effects in a pilot trial,<sup>48</sup> but SCAST was neutral and if anything, favoured placebo;<sup>45</sup> the Valsartan Efficacy on Modest blood pressure Reduction in acute ischaemic stroke (VENTURE) trial was neutral for functional outcome but reported significantly more early neurological deterioration among patients in the valsartan group;<sup>46</sup> the low dose beta-blockade in acute Stroke Trial (BEST) reported increased early death in those randomised to beta-blocker versus control (though this was minimal, and did not reach significance in adjusted analyses),<sup>34</sup> and in the Controlling Hypertension and Hypotension Immediately Post Stroke (CHHIPS) trial,<sup>51</sup> labetalol was safe. Results from small RCTs of CCBs have produced mixed results: some favoured placebo,<sup>40,41</sup> but others have been neutral.<sup>33</sup> Small and larger RCTs in Nitric Oxide (NO) donors have reported safety with GTN but no significant effect on functional outcome.<sup>29,37,44,47</sup>

Premorbid and initial blood pressure level and blood pressure targets may also be of importance.<sup>1</sup> Most RCTs excluded AIS patients with extremely elevated systolic blood pressure (>220 mm Hg), and thus the effects of blood pressure lowering in this group are unknown. Owing to heterogeneity in terms of blood pressure targets among studies, no robust conclusions can be drawn as to the optimal blood pressure target, though avoiding large drops in blood pressure during the first 24 hours seems reasonable given the negative effects reported on some outcomes in trials of intravenous CCBs with large (>20%) reduction in blood pressure.<sup>40,41,49,53</sup> Time to treatment may have an effect and has varied considerably across RCTs (<4 hours to 5 days). In the ENOS patient subgroup treated within 6 hours<sup>54</sup> treatment with GTN was associated with significantly improved functional outcome, and among a similar group of participants in SCAST there was a non-significant benefit on the composite vascular endpoint in those treated < 6 hours.<sup>55</sup> In CATIS, subgroup analysis showed a reduction in poor functional outcome in those randomised later (>24 hours) from stroke symptom onset.<sup>35</sup> In RIGHT-2, where treatment was initiated within 4 hours of onset, GTN was associated with a non-significant trend for a worse functional outcome;<sup>27</sup> this tendency towards harm was more evident in patients with very early stroke

(<1 hour), and severe stroke (Glasgow Coma Scale <12, NIHSS >12).<sup>27</sup>

Neurological severity and subtype may alter the effect of treatment. In a secondary subgroup analysis of patients with AIS included in SCAST there was a benefit of treatment with candesartan in larger (total and partial anterior circulation), but not smaller (lacunar) AIS,<sup>52</sup> as shown in another study.<sup>56</sup> The presence of large vessel occlusion and significant carotid artery stenosis may influence the effect of blood pressure lowering treatment, although data are partly conflicting: a pre-specified subgroup analysis from SCAST of AIS patients with carotid imaging (n=993) showed that those with severe stenosis ( $\geq 70\%$ ) treated with candesartan had a trend towards increased risk of stroke progression and poor functional outcome (ordinal shift on the mRS).<sup>57</sup> Conversely, in ENOS, GTN was shown to be safe across all levels of ipsilateral carotid stenosis among participants with carotid imaging data (n = 2038).<sup>58</sup>

We considered a 2014 Cochrane review relevant to this topic.<sup>6</sup> In the subgroup of 11,015 patients with AIS there was no benefit of any vasodepressor drug compared with control on the outcome of death and dependency (as reported in the individual trials): OR = 1.00 (95%CI: 0.92–1.08). Furthermore, no differences in treatment effect were observed in subgroups according to drug class, stroke location (cortical versus subcortical), or blood pressure target used. CCBs, ACEi, ARB, beta-blockers and NO donors all lowered blood pressure.<sup>6</sup>

#### Recommendations

In hospitalised patients with acute ischaemic stroke and blood pressure < 220/110 mm Hg not treated with intravenous thrombolysis or mechanical thrombectomy, we suggest against the routine use of blood pressure lowering agents at least in first 24 hours following symptom onset, unless this is necessary for a specific comorbid condition.

Quality of evidence: **Moderate** ⊕⊕⊕

Strength of recommendation: **Weak** ↓?

#### Expert consensus statement

In patients with acute ischaemic stroke not treated with intravenous thrombolysis or mechanical thrombectomy and blood pressure >220/120 mm Hg, careful blood pressure reduction (<15% systolic blood pressure reduction in 24 hours) is reasonable and likely to be safe. No specific blood pressure lowering agent can be recommended. Vote 10 of 10.

## In hospitalised patients with acute ischaemic stroke and undergoing intravenous thrombolysis (with or without mechanical thrombectomy), does blood lowering with any vasodepressor drug compared to control improve outcome?

### Analysis of current evidence

Based on data from small, uncontrolled, non-randomised pilot studies,<sup>59–61</sup> elevated systolic and diastolic blood pressure levels before (>185/110 mm Hg) and during (>180/105 mm Hg) alteplase infusion of AIS patients are contraindications to IVT based upon the protocol for the original National Institute of Neurological Diseases and Stroke (NINDS)-recombinant tissue plasminogen activator (rt-PA) Stroke Study.<sup>62</sup> AHA/ASA and ESO guidelines endorse these thresholds and advocate against treating AIS patients with intravenous IVT, when blood pressure is uncontrolled before or during thrombolysis treatment.<sup>13,20,25</sup>

There are no randomised data to support these recommended blood pressure thresholds, and since elevated blood pressure is common in patients with AIS,<sup>63</sup> IVT can be delayed or even denied in a substantial number of patients whose blood pressure is above this threshold and unresponsive to antihypertensive treatment.<sup>64</sup> In addition, there is appropriate concern that aggressive blood pressure reduction, may reduce viable penumbral tissue, result in expansion of the cerebral infarction and contribute to neurological deterioration.<sup>64–66</sup>

Conversely, evidence from large, non-randomised real world evidence studies and meta-analyses suggest that elevated blood pressure levels before or during IVT may be related to adverse clinical and imaging outcomes including a higher risk of symptomatic intracranial haemorrhage (sICH), a lower likelihood of complete recanalisation and three-month good functional outcome (mRS scores of 0–2) or three-month functional improvement (1 point decrease across all mRS grades on shift analyses).<sup>67–72</sup> Additionally, in a post-hoc analysis of the second European Cooperative Acute Stroke Study (ECASS), increasing baseline, maximum and mean (per 10 mm Hg) systolic blood pressure levels were associated with a higher risk of parenchymal haemorrhage during the 7 first days after symptom onset in AIS.<sup>73</sup> Similarly, in a post-hoc analysis of third International Stroke Trial, the odds of sICH increased by 10% (95%CI: 2–19%) for each 10 mm Hg increase in baseline systolic blood pressure, after adjustment for baseline stroke severity.<sup>74</sup> Many of these have studies illustrated a linear

relationship between increasing systolic or diastolic blood pressure levels and the likelihood of sICH and of death or dependency.<sup>70–74</sup> They have also indicated that intensive blood pressure control (below the recommended levels of 180/105 mm Hg) during or after alteplase is safe, and may further improve clinical outcomes and reduce the rates of any or symptomatic intracranial bleeding.<sup>67,75,76</sup>

There is no randomised evidence of the safety and efficacy of blood pressure lowering therapies in AIS patients treated with IVT that exceed guideline-recommended blood pressure thresholds (>185/110 mm Hg before alteplase bolus and >180/105 mm Hg during and 24 hours after alteplase infusion).<sup>13,20,25</sup> However, there is considerable observational data showing that blood pressure protocol violations are common among AIS patients treated with IVT.<sup>67,77,78</sup> In particular, a single-centre observational study reported that pre-treatment blood pressure violations (>185/110 mm Hg) occurred in 12% of AIS treated with IVT in everyday clinical practice and were independently associated with higher likelihood of sICH (OR: 2.59, 95%CI: 1.07–6.25).<sup>79</sup> Moreover, in a recent retrospective analysis of the Safe Implementation of Treatments in Stroke (SITS) thrombolysis registry in regard to 11 off-label criteria related to the European license for alteplase, elevated pre-treatment blood pressure levels represented the only off-label criterion that was independently associated with a higher odds of sICH (OR: 1.39; 95%CI: 1.08–1.80).<sup>77</sup> Finally, a post-hoc analysis of a phase III RCT of sono-thrombolysis that implemented a robust blood pressure control protocol using serial blood pressure recordings before during and after alteplase infusions reported a high rate (34%) of blood pressure excursions above the prespecified thresholds among AIS patients treated with IVT. Most notable was that blood pressure excursions above guideline thresholds were associated with adverse clinical (neurological worsening at 24 hours, functional dependence or death at 3 months) and imaging (any ICH at 24 hours) outcomes.<sup>78</sup> The heterogeneity of the study populations needs to be considered when interpreting these results: patients had different AIS subtypes (large vessel occlusion vs. lacunar stroke), different medical histories (with or without history of hypertension) and received different blood-pressure lowering therapies (b-blockers vs. calcium channel blockers vs. central acting antihypertensives). Finally, no specific antihypertensive agent has been tested for controlling elevated blood pressure levels (exceeding the recommended thresholds before or during IVT for AIS).

The Enhanced Control of Hypertension and Thrombolysis Stroke Study (ENCHANTED) investigated the safety and efficacy of blood pressure lowering strategies in AIS patients treated with IVT according to guideline criteria (blood pressure levels <185/110 mm Hg).<sup>80</sup> 2196 patients with systolic blood pressure >150 mm Hg who were eligible for IVT with alteplase were randomised to intensive blood pressure lowering (target systolic blood pressure 130–140 mm Hg within 1 hour) or to a standard target systolic blood pressure (<180 mm Hg), and for maintenance of such levels over 72 hours. Mean systolic blood pressure over 24 hours was 144 ± 10 mm Hg in the intensive group and 150 ± 12 mm Hg in the control group.<sup>80</sup> Functional outcome at 90 days did not differ between groups (unadjusted common OR per 1-point improvement across all mRS scores: 1.01, 95%CI: 0.87–1.17, *p* = 0.87). However, fewer patients in the intensive group (14.8%) than in the control group (18.7%) had any ICH (OR 0.75, 0.60–0.94, *p* = 0.01). Blood pressure reduction was also associated with a non-significant decrease in type 2 parenchymal haemorrhage (OR 0.71, 95%CI 0.50–1.01, *p* = 0.05).<sup>80</sup> The health-related quality of life was assessed as an overall health utility score (EQ-5D) and no differences were observed between the two treatment groups.<sup>80</sup>

Certain methodological concerns need to be taken into account when interpreting ENCHANTED findings.<sup>81</sup> First, the study design was open-label and blinded-endpoint adjudication. Second, the mean difference in systolic blood pressure levels during the first 24 hours between the active and control treatment group was modest differing by <7 mm Hg rather than the planned 15 mm Hg; this may have limited the possibility to detect significant treatment effects between groups. Third, included patients already had blood pressure controlled below the 185/110 mm Hg thresholds and may have received blood pressure lowering treatment prior to inclusion. Fourth, almost three quarters of randomised patients were from Asia where the pattern of cerebrovascular disease differs from the West. Finally, advanced imaging was not included in the selection of patients, and thus the potential of exclusion of patients with higher risk of sICH who may have benefited the most from intensive blood pressure lowering treatment strategies.

Table 4 provides details regarding the safety and efficacy of intensive blood pressure lowering (target systolic blood pressure 130–140 mm Hg within 1 hour) compared to guideline-recommended blood pressure levels (<180 mm Hg) over 72 hours following symptom onset in AIS patients receiving IVT.



**Table 4.** Evidence profile table for safety and efficacy of intensive systolic blood pressure lowering (target 130–140 mmHg within 1 hour) compared to guideline-recommended systolic blood pressure levels (<180 mm Hg) over 72 hours following symptom onset in acute ischaemic stroke patients receiving intravenous thrombolysis.

Certainty assessment		No. of patients			Effect		Absolute (95% CI)	Certainty	Importance			
No. of studies	Study design	Risk of bias	Inconsistency	Indirectness	Imprecision	Other considerations				Experimental arm	Control arm	Relative (95% CI)
3 months mortality												
1	Randomised trial	Unclear	N/A	Not serious	Very serious	N/A	102/1081 (9.4%)	88/1115 (7.9%)	OR 1.22 (0.90 to 1.64)	16 more per 1,000 (from 7 fewer to 44 more)	⊕○○○ Very low	Critical
3 months good functional outcome (mRS scores 0–2)												
1	Randomised trial	Unclear	N/A	Not serious	Very serious	N/A	712/1072 (66.4%)	734/1108 (66.4%)	OR 1.00 (0.83 to 1.20)	0 fewer per 1,000 (from 38 fewer to 42 more)	⊕○○○ Very low	Critical
3 months improved mRS scores (shift analysis)												
1	Randomised trial	Unclear	N/A	Not serious	Very serious	N/A	-	-	common OR 1.01 (0.87 to 1.17)	-	⊕○○○ Very low	Critical

CI: confidence interval; OR: odds ratio.

### Additional information

The ENCHANTED trial observed no significant heterogeneity of the treatment effect (shift on 3-month mRS score) in subgroups including demographics (age, sex, ethnicity), pre-treatment with antiplatelets, dose of alteplase (low vs. standard), stroke severity stratified by NIHSS scores and stroke subgroups where large vessel occlusion might be anticipated, AIS subtypes classified on the basis of clinician diagnosis of large vessel atherosclerosis, cardioembolism or lacunar stroke.<sup>80,82</sup> Notably, in the prespecified subgroup analysis of severe stroke defined by computed tomography or magnetic resonance angiogram confirmation of large vessel occlusion, receipt of endovascular therapy, final diagnosis of large artery atherosclerotic disease, or high (>10) baseline NIHSS score there was no significant difference in the primary outcome of death or disability at three months in the two treatment arms. However, intensive blood pressure lowering significantly increased three-month mortality (OR 1.52, 95%CI: 1.09–2.13; p=0.014) compared with guideline blood pressure lowering, despite significantly lower clinician-reported ICH (OR0.63, 95%CI: 0.43–0.92; p=0.016).<sup>83</sup> The findings of the aforementioned post-hoc analysis may only serve for hypothesis generation and deserve further validation in future RCTs.

A subgroup analysis of the ENOS trial within 48 hours of stroke onset compared GTN to no GTN in 425 AIS patients presenting with elevated systolic blood pressure levels (140–220 mm Hg) who also received treatment with intravenous alteplase.<sup>37</sup> A total of 204 and 221 patients were randomised to active and control groups respectively. GTN was not associated with improved three-month functional outcome compared to placebo (unadjusted common OR per 1-point worsening across all mRS scores at three months: 0.93, 95%CI: 0.66–1.30).<sup>37</sup>

An individual patient data meta-analysis of different RCTs evaluating the safety and efficacy of NO for blood pressure management in acute stroke has reported that among 98 AIS patients treated with IVT, GTN was associated with improved functional outcomes at three months compared to placebo (unadjusted common OR per 1-point worsening across all mRS grades: 0.32, 95%CI: 0.15–0.69).<sup>84</sup> However, this was not confirmed in the RIGHT-2 trial, although the GTN group had a trend towards less haemorrhagic transformation (3% vs 8%; OR: 0.38, 95%CI: 0.13–1.13; p=0.082).<sup>29</sup>



### Recommendations

1. In patients with acute ischaemic stroke undergoing treatment with intravenous thrombolysis (with or without mechanical thrombectomy) we suggest maintaining blood pressure below 185/110 mm Hg before bolus and below 180/105 mm Hg after bolus, and for 24 hours after alteplase infusion. No specific blood pressure-lowering agent can be recommended.

Quality of evidence: **Very low** ⊕

Strength of recommendation: **Weak** ↑?

2. In patients with acute ischaemic stroke undergoing treatment with intravenous thrombolysis (with or without mechanical thrombectomy) we suggest against lowering systolic blood pressure to a target of 130–140 mm Hg compared to <180 mm Hg during the first 72 hours following of symptom onset.

Quality of evidence: **Moderate** ⊕⊕⊕

Strength of recommendation: **Weak** ↓?

## In patients with acute ischaemic stroke caused by large vessel occlusion and undergoing mechanical thrombectomy (with or without intravenous thrombolysis), does blood pressure lowering with any vasodepressor drug compared to no drug improve outcome?

### Analysis of current evidence

Despite MT becoming standard of care for patients with AIS due to large vessel occlusion of the anterior circulation over the last year,<sup>85–87</sup> approximately 46% of patients with successful reperfusion die or are left disabled following the procedure.<sup>88</sup> Blood pressure management in the acute/subacute setting following recanalisation is a potential modifiable determinant of functional improvement in this population. However, data regarding the optimal blood pressure management for AIS undergoing successful MT is scarce<sup>89</sup> and there is no clear consensus over the intensity of blood pressure (lowering or enhancement) before, during or after the MT.

Current AHA/ASA guidelines advocate thresholds of systolic blood pressure  $\leq 180$  mm Hg and diastolic blood pressure  $\leq 105$  mm Hg during and for the first 24 hours following MT,<sup>25</sup> which have been arbitrarily adopted based on evidence regarding blood pressure management in the setting of IVT for AIS. The rationale of this recommendation is to avoid reperfusion haemorrhages associated with elevated blood pressure levels before, during and after MT for large vessel occlusion.

Current MT guidelines from the ESO and European Society for Minimally Invasive Neurological Therapy (ESMINT) recommend systolic and diastolic blood pressure levels  $< 180/105$  mm Hg during and 24 hours after MT and specify the importance of avoiding drops in systolic blood pressure during the procedure.<sup>18</sup> No specific blood pressure-lowering drug has been recommended. The quality of evidence is graded as low/very low and strength of recommendation is weak in both American<sup>25</sup> and European<sup>18</sup> recommendations.

The Society for Neuroscience in Anesthesiology and Critical Care Expert Consensus Statement, recommend that systolic blood pressure should be maintained  $> 140$  mm Hg (fluids and vasopressors) and  $< 180$  mm Hg (with or without IVT), and diastolic blood pressure  $< 105$  mm Hg (class IIa, level of evidence B) during endovascular treatment for AIS.<sup>90</sup>

There is a paucity of RCT data regarding the potential safety and efficacy of blood pressure lowering therapies in MT-treated AIS patients with large vessel occlusion that receive endovascular reperfusion therapies. Most large vessel occlusion patients enrolled in the RCTs within 6 hours of symptom onset had received IVT before MT and the trial protocols stipulated management according to local guidelines with systolic or diastolic blood pressure levels  $\leq 180/105$  mm Hg during and for 24 hours after the procedure.

**Observational evidence.** Nevertheless, there are observational data indicating that extremely high systolic and/or diastolic blood pressure levels ( $> 220/120$  mm Hg) before MT for large vessel occlusion stroke are associated with worse clinical and imaging outcomes including higher rates of sICH, mortality and functional dependence.<sup>91–94</sup>

There are also observational data indicating that hypotension is frequent during MT, can mainly be explained by sedation modality (general anaesthesia in particular) and appears to be associated with infarct expansion and worse functional outcomes at three months.<sup>95</sup> An analysis of individual patient data from 3 RCTs (SAGA Collaborators) reported that both low ( $< 70$  mm Hg) and high ( $> 90$  mm Hg) mean arterial blood pressure levels during MT were associated with worse functional outcomes at three months.<sup>96</sup> Also, a 10% mean arterial blood pressure drop from baseline during MT for AIS has been related to worse 3-month functional outcomes regardless of sedation modality.<sup>97</sup> Other observational studies and meta-analysis also showed that mean arterial blood pressure falls  $\geq 10\%$  during the endovascular procedure, intra-procedural mean arterial blood pressure levels  $< 70$  mm Hg for a duration of  $\geq 10$  min and mean arterial blood pressure  $< 100$  mm Hg before recanalisation are

associated with adverse clinical outcomes in MT-treated patients.<sup>98–100</sup> These observations support the hypothesis that a decrease in systemic blood pressure may lead to hypoperfusion of ischaemic penumbra and cause an increase in final infarction sizes.<sup>99,100</sup>

There are accruing observational evidence that extremely elevated systolic and/or diastolic blood pressure levels after MT for large vessel occlusion stroke appear also to be associated with worse clinical and imaging outcomes including higher rates of sICH, mortality and functional dependence and this association may be mediated by recanalisation status following MT.<sup>91,101–104</sup>

Moreover, increased systolic blood pressure variability appears to be associated with adverse clinical outcomes in large vessel occlusion patients treated with MT independent of blood pressure levels.<sup>105</sup>

However, the heterogeneity of study populations needs to be considered when interpreting these results according to recanalisation status (complete versus incomplete or no recanalisation), different blood pressure parameters (systolic/diastolic blood pressure vs. mean arterial blood pressure), medical history (hypertension, cardiac disease), reperfusion strategy (direct thrombectomy vs. bridging therapy with IVT and MT) and different blood pressure lowering agents ( $\beta$ -blockers vs. CCBs vs. centrally acting antihypertensives).

**Randomised evidence.** There is one pilot RCT assessing the feasibility of differential systolic blood pressure targeting during MT for anterior circulation ischaemic stroke. This trial randomly assigned 51 patients to receive either standard or augmented systolic blood pressure management from the start of anaesthesia to recanalisation of the target vessel.<sup>106</sup> There were no safety concerns with trial procedures and all feasibility targets were achieved.

Further randomised evidence on the intra-procedural management of blood pressure during MT will be provided by an ongoing explorative single-centre RCT with a PROBE (parallel-group, open-label randomised controlled trial with blinded endpoint evaluation) design.<sup>107</sup> In the control group, intra-procedural systolic blood pressure target range is 140–180 mm Hg. The intervention group is the individualised approach, which is maintaining the intra-procedural systolic blood pressure at the level on presentation ( $\pm 10$  mm Hg). The primary endpoint is the 90-day mRS score dichotomised by 0–2 (good functional outcome) to 3–6 (poor functional outcome). Secondary endpoints include early neurological improvement, infarction size, and systemic physiology monitor parameters. Another ongoing multicentre RCT in France will use PROBE design to assess the

**Table 5.** Randomized controlled clinical trials evaluating different blood pressures targets following mechanical thrombectomy in acute ischaemic stroke patients with large vessel occlusion receiving endovascular therapies.

Study	Location	N patients	Experimental targets	Standard target	Randomization	Period of intervention	Termination date
BEST-II (109)	USA (Cincinnati & Nashville) & Canada	120	140–160 mmHg <sup>a</sup> 110–140 mmHg <sup>b</sup>	160–180 mmHg	N/A	24 hours	March 2023
DETECT(111)	Canada (Hamilton)	30	<140 mmHg	<180 mmHg	1 hour	48 hours	June 2022
ENCHANTED2(110)	International	2236	<120 mmHg	140–180 mmHg	3 hours	72 hours	February, 2023
OPTIMAL BP (112)	Korea (multicenter)	644	<140 mmHg	<180 mmHg	0.5–1 hour	24 hours	December 2023
BP-TARGET (113,114)	France (multicenter)	320	<130 mmHg	<185 mmHg	1 hour	24–36 hours	Completed No differences in clinical or imaging endpoints between the two randomization arms

<sup>a</sup>First active comparator arm of BEST-II.

<sup>b</sup>Second active comparator arm of BEST-II.

individualised approach of blood pressure management during MT.<sup>108</sup> Patients randomised to the intervention group will be treated with an individualised approach, which is maintaining mean arterial blood pressure during MT within 10% of the first mean arterial blood pressure measurement before MT. In the control group, the intraprocedural systolic blood pressure target range will range between 140–180 mm Hg. The primary endpoint is good functional outcome at 90 days (mRS scores of 0–2). Secondary endpoints include early neurological improvement, excellent outcome, infarct size, systemic physiology monitor parameter, sICH rates and mortality at 3 months.

Table 5 summarises the design of five RCTs that evaluate different blood pressure targets below the pre-specified cut-off of 180/105 mm Hg after the end of MT.<sup>109–112</sup> The only completed RCT is the Blood Pressure Target in Acute Stroke to Reduce Haemorrhage After Endovascular Therapy (BP-TARGET) trial, a multicentre, prospective, randomised, controlled, open-label, blinded endpoint clinical trial conducted in France.<sup>113,114</sup> The study enrolled AIS patients with large vessel occlusion in the anterior circulation who had successful reperfusion (defined as modified Thrombolysis In Cerebral Infarction (mTICI) grades of 2 b or 3) following MT. The enrolled patients were randomly assigned, in a 1:1 ratio, to have intensive (systolic blood pressure target 100–129 mm Hg) or a conservative (systolic blood pressure target 130–185 mm Hg) blood pressure control in the following 24 hours, with the primary efficacy endpoint of radiographic intraparenchymal haemorrhage at 24–36 hours and the primary safety endpoint of hypotension occurrence. Secondary endpoints included the rate of the sICH, the overall distribution of the mRS scores at 90 days, good functional outcome (90-day mRS scores of 0–2), functional improvement (90-day decrease by 1 point across all 90-day mRS grades), infarct volume at follow-up CT scan at 24–36 h, change in NIHSS-scores at 24 hours, and all-cause mortality at 90 days. A total of 158 and 160 patients were randomised to the intensive and conservative systolic blood pressure groups respectively, with similar proportions of the primary endpoint (any ICH: 42% in the intensive group vs. 43% in the conservative group) and hypotension in the two treatment groups (8% in the intensive group vs. 3% in the conservative group). All secondary endpoints including three-month functional improvement (common OR for 1-point improvement across all mRS categories: 0.86; 95%CI: 0.57–1.28), three-month good functional outcome (mRS scores 0–2; 44% vs. 45%) and three-month mortality (19% vs. 14%) were similar in the

two treatment groups.<sup>113</sup> The main methodological shortcoming of this RCT included: (i) modest systolic blood pressure difference (10 mm Hg) between the randomised groups; (ii) one third of the individuals in the conservative arm having systolic blood pressure measurements < 130 mm Hg; (iii) moderate sample size; (iv) primary endpoint being imaging, rather than clinical, (v) non-invasive modality of blood pressure assessment every 15 minutes for the first 2 hours, then every 30 minutes for 6 hours and every 1 hour for the remaining 16 hours.

Table 6 provides details regarding the safety and efficacy of reducing systolic blood pressure < 130 mm Hg in anterior circulation large vessel occlusion during the first 24 hours following successful MT.

### *Additional information*

Two protocols of RCTs evaluating the safety and efficacy of MT compared to standard therapy in AIS patients with anterior circulation large vessel occlusion have provided additional recommendations regarding optimal blood pressure management before and after the endovascular procedure. The ESCAPE (Endovascular Treatment for Small Core and Proximal Occlusion Ischaemic Stroke) trial protocol stated that systolic blood pressure  $\geq 150$  mm Hg is probably useful in promoting and keeping collateral flow adequate, while the artery remained occluded, and that controlling blood pressure once reperfusion has been achieved and aiming for a normal blood pressure for that individual was sensible.<sup>115</sup> Labetalol or an intravenous beta-blocker such as metoprolol in low doses were recommended for post-procedural blood pressure management.<sup>115</sup> The DAWN (Clinical Mismatch in the Triage of Wake Up and Late Presenting Strokes Undergoing Neurointervention With Trevo) trial protocol recommended maintaining systolic blood pressure < 140 mm Hg in the first 24 hours in subjects who were reperfused after MT.<sup>116</sup>

Three RCTs investigating the optimal anaesthesia management (conscious sedation vs. general anaesthesia) of large vessel occlusion patients treated with MT have suggested specific systolic blood pressure ranges during the procedures.<sup>117–119</sup> The advocated intraprocedural systolic blood pressure range until reperfusion was 140–160 mm Hg in SIESTA (Sedation vs. Intubation for Endovascular Stroke Treatment) trial,<sup>117</sup> 140–180 mm Hg in ANSTROKE (Anaesthesia During Stroke) trial<sup>118</sup> and > 140 mm Hg in GOLIATH (General Or Local Anaesthesia in Intra Arterial Therapy) trial.<sup>119</sup>

**Table 6.** Evidence profile for reducing systolic blood pressure < 130mmHg in anterior circulation large vessel occlusion during the first 24 hours following successful mechanical thrombectomy. The following outcomes were evaluated: (i) 3 months mortality; (ii) 3 months good functional outcome (mRS scores 0-2); (iii) 3 months functional improvement (defined as 1-point decrease across all mRS-scores); (iv) any Intracranial Hemorrhage (ICH).

Certainty assessment		№ of patients				Effect		Importance				
№ of studies	Study design	Risk of bias	Inconsistency	Indirectness	Imprecision	Other considerations	Experimental arm		Control arm	Relative (95% CI)	Absolute (95% CI)	Certainty
3 months mortality												
1	Randomised trial	Unclear	N/A	Not serious	Serious	N/A	29/152 (19.1%)	21/153 (13.7%)	OR 1.48 (0.80 to 2.74)	53 More per 1,000 (from 24 fewer to 166 more)	⊕○○○ Very low	Critical
3 months good functional outcome (mRS scores 0-2)												
1	Randomised trial	Unclear	N/A	Not serious	Serious	N/A	67/152 (44.1%)	69/153 (45.1%)	OR 0.96 (0.61 to 1.51)	10 Fewer per 1,000 (from 17 fewer to 103 more)	⊕○○○ Very low	Critical
3 months improved mRS scores (shift analysis)												
1	Randomised trial	Unclear	N/A	Not serious	Serious	N/A	-	-	Common OR 0.86 (0.57 to 1.28)	-	⊕○○○ Very low	Critical
Any ICH												
1	randomised trial	Unclear	N/A	Not serious	serious	none	65/154 (42.2%)	68/157 (43.3%)	OR 0.96 (0.60 to 1.51)	10 fewer per 1,000 (from 115 fewer to 101 more)	⊕○○○ Very low	Important

CI: confidence interval; OR: odds ratio.



Large vessel occlusion patients who undergo successful reperfusion documented as mTICI grades  $\geq 2b$  following endovascular therapy display spontaneous blood pressure drop due to potential earlier reperfusion of the ischaemic penumbra leading to earlier haemodynamic normalisation.<sup>120,121</sup> In addition, different observational studies have evaluated blood pressure levels following successful recanalisation in AIS patients due to large vessel occlusion and have consistently reported an inverse association between increasing post-reperfusion blood pressures and good functional outcomes at three months.<sup>122–124</sup> They also highlight, that systolic blood pressure levels  $< 140$  mmHg post MT are related to the higher odds of good functional outcome. Also, a single-centre study has recently documented that spontaneous systolic blood pressure drop after MT is an early predictor of dramatic neurological recovery (defined as 8-point-reduction in baseline NIHSS-score or an overall NIHSS  $\leq 2$  points at 24h) in large vessel occlusion patients that receive endovascular treatment.<sup>125</sup> There is no randomised data regarding the safety and efficacy of induced hypertension in large vessel occlusion patients who achieve successful reperfusion following endovascular therapy. Nevertheless, there are theoretical concerns against drug-induced hypertension in large vessel occlusion with complete recanalisation (in particular in patients achieving mTICI 3 corresponding to complete reperfusion without any parenchymal defects even in distal vessels) following endovascular therapy. In particular, transcranial Doppler studies monitoring cerebral haemodynamics of AIS patients in real-time have shown that elevated flow velocities following complete recanalisation of large vessel occlusion may lead to hyperperfusion haemorrhage within the area of infarcted brain tissue in large vessel occlusion patients achieving mTICI 2b/2c/3 grades following MT.<sup>126–128</sup>

Dynamic autoregulation-based blood pressure targets instead of fixed blood pressure thresholds hold promise as a guide for individualising haemodynamic management in AIS due to large vessel occlusion. In a small observational study, a novel approach to define the limits of autoregulation using near-infrared spectroscopy (NIRS) was proposed. Continuous non-invasive NIRS monitoring in response to changes in mean arterial pressure was found to identify and track the patient-specific blood pressure range at which autoregulation was optimally functioning in individual patients after large vessel AIS.<sup>129</sup>

### Recommendations

1. In patients with acute ischaemic stroke due to large vessel occlusion undergoing mechanical thrombectomy (with or without intravenous thrombolysis) we suggest keeping blood pressure below 180/105 mmHg during, and 24 hours after, mechanical thrombectomy. No specific blood pressure lowering agent can be recommended.  
Quality of evidence: **Very low**⊕  
Strength of recommendation: **Weak** ↑?
2. In patients with acute ischaemic stroke due to large vessel occlusion we suggest against actively reducing systolic blood pressure  $< 130$  mmHg during the first 24 hours following successful mechanical thrombectomy  
Quality of evidence: **Moderate**⊕⊕⊕  
Strength of recommendation: **Weak** ↓?
3. In patients with acute ischaemic stroke due to large vessel occlusion undergoing treatment with mechanical thrombectomy (with or without intravenous thrombolysis) systolic blood pressure drops should be avoided.  
Quality of evidence: **Very low**⊕  
Strength of recommendation: **Strong** ↓↓

### Expert consensus statement

In patients with acute ischaemic stroke due to large vessel occlusion who achieve successful reperfusion defined as modified Thrombolysis in Cerebral Infarction grade of 3 following mechanical thrombectomy we suggest against induced hypertension. Vote 10 of 10

## In patients with acute ischaemic stroke not treated with reperfusion therapies (intravenous thrombolysis or mechanical thrombectomy) and with clinical deterioration, does induced hypertension by any vasopressor drug compared to no drug improve outcome?

### Analysis of current evidence

The hypertensive response seen in patients with AIS has traditionally been viewed as a pathophysiological response to ensure adequate cerebral perfusion in patients with compromised cerebral circulation. The rationale for pharmacologically inducing hypertension is to maintain adequate cerebral perfusion especially in patients with large vessel occlusion, fluctuating symptoms and low blood pressure who are not eligible for reperfusion or where reperfusion has failed.

The Safety and Efficacy of Therapeutic Induced HYPERTENSION (SETIN-HYPERTENSION)



randomised 153 patients with major neurological deficit (NIHSS-score 4–18) from non-cardioembolic stroke aetiology, ineligibility for reperfusion therapy or progressive stroke. Progressive stroke was defined as 2-point increase in the NIHSS score, including an increase in the motor score for the affected upper or lower limbs during hospitalisation and the presence of new lesions or infarct growth on DWI performed within 24 hour of aggravation.<sup>130</sup> Patients with systolic blood pressure >170 mm Hg at baseline were excluded. The intervention group received treatment with intravenous phenylephrine with a target of 20% increase in systolic blood pressure from baseline. Induced hypertension was associated with early neurologic improvement at 7 days (OR:2.49, 95%CI: 1.25–4.96, p = 0.010) though, this did not translate into functional improvement at 90 days (shift analysis in mRS scores): unadjusted common OR 1.27, 95%CI: 0.72–2.22, p = 0.422). Mortality at 90 days did not differ between the intervention group (1.3%) and the control group (0%; p = 0.313). The rates of patients with good functional outcome at 90 days tended to be higher in the intervention group (75.0% vs. 63.2%, p = 0.114). ICH on follow-up MRI was more prevalent in the induced hypertension group (6.6% vs 0%, p = 0.022), however the rates of sICH were similar in the two groups (1.3% vs. 0%, p = 0.313).<sup>130</sup> There are several limitations to the SETIN-HYPERTENSION trial. First, patients in the induced hypertension group were younger, were more often included due to stroke progression, had higher NIHSS scores and a higher rate of large vessel occlusions. Second, the small sample size and that the trial was conducted in Korea, generalisability is questionable.

Table 7 provides details regarding the safety and efficacy of blood pressure elevation using any vasopressor drug compared to no vasopressor drug in patients with AIS and clinical deterioration not eligible for reperfusion treatment.

**Additional information**

In a pilot trial, 15 patients recruited within 7 days of symptom onset, with > 20% diffusion – perfusion mismatch on MRI and quantifiable, stable or worsening of aphasia, hemispatial neglect and/or hemiparesis were randomly assigned to induced hypertension with phenylephrine or control.<sup>131</sup> There was more improvement in NIHSS scores in the induced hypertension group compared to the control group on day 3 and on day 90.<sup>131</sup> Since functional outcome was not assessed with mRS at 90 days the study was not included in our meta-analysis.

The Early Manipulation of Arterial Blood Pressure in Acute Ischaemic Stroke (MAPAS) trial randomised 218 patients within 12 hours of acute ischaemic stroke to maintain systolic blood pressure during 24 hours

**Table 7. Evidence profile for the safety and efficacy of blood pressure elevation using any vasopressor drug compared to no vasopressor drug in patients acute ischaemic stroke and clinical deterioration not treated with reperfusion therapies.**

Certainty assessment		№ of patients				Effect			Importance			
№ of studies	Study design	Risk of bias	Inconsistency	Indirectness	Imprecision	Other considerations	blood pressure elevation with vasopressor	Control		Relative (95% CI)	Absolute (95% CI)	
3	3 months mortality											
1	Randomised trial	Not serious	Not serious	Not serious	Very serious <sup>a</sup>	Publication bias strongly suspected <sup>b</sup>	1/76 (1.3%)	0/77 (0.0%)	OR 3.08 (0.12 to 76.79)	0 fewer per 1,000 (from 0 fewer to 0 fewer)	⊕○○○ Very low	Critical
3	3 months good functional outcome (mRS scores 0–2)											
1	Randomised trial	Not serious	Not serious	Not serious	Serious <sup>c</sup>	Publication bias strongly suspected <sup>b</sup>	57/76 (75.0%)	49/77 (63.6%)	OR 1.71 (0.85 to 3.44)	113 more per 1,000 (from 38 fewer to 221 more)	⊕○○○ Low	Critical

CI: confidence interval; OR: odds ratio.

<sup>a</sup>Very wide confidence intervals.

<sup>b</sup>One study reported this outcome.

<sup>c</sup>Wide confidence intervals.

within three ranges; Group 1: SBP target 140–160 mm Hg, Group 2: SBP target 161–180 mm Hg, and Group 3: SBP target 181–200 mm Hg.<sup>132</sup> Overall, systolic blood pressure was increased in 41% of the patients. Norepinephrine was used to increase blood pressure in 17% of patients in Group 1, 48% of patients in Group 2 and 62% of patients in Group 3. There was no difference between the groups in functional outcome at 90 days. Adverse events (acute coronary syndrome and bradycardia) were limited to group 2 (4%) and Group 3 (7.6%) and were associated with norepinephrine infusion. There was also a significantly higher sICH rate in Group 3.<sup>132</sup>

In addition, observational data from small pilot studies indicate that phenylephrine induced hypertension may be associated with neurological improvement in patients with AIS due to large artery atherosclerotic steno-occlusive disease or small vessel occlusion.<sup>133–137</sup>

#### Recommendation

In patients with acute ischaemic stroke not treated with reperfusion therapies (intravenous thrombolysis or mechanical thrombectomy) who experience clinical deterioration, we suggest against the routine use of vasopressor drugs to increase blood pressure.

Quality of evidence: *Very low* ⊕

Strength of recommendation: *Weak* ↓↓

#### Expert consensus statement

In patients with acute ischaemic stroke not treated with reperfusion therapies (intravenous thrombolysis or mechanical thrombectomy) and with clinical deterioration where a haemodynamic mechanism is suspected or shown to be directly responsible for the deterioration, we suggest:

- stopping existing blood pressure lowering therapy,
- administering intravenous fluids and
- introducing non-pharmacological procedures to raise blood pressure

before considering

- careful use of vasopressor agents to increase blood pressure with close monitoring of blood pressure values.

Vote 10 of 10.

## In patients with acute ischaemic stroke, does continuing versus temporarily stopping previous oral blood pressure lowering therapy improve outcome?

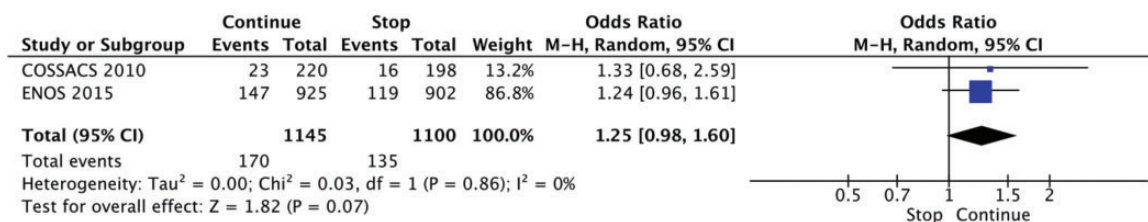
### Analysis of current evidence

Blood pressure lowering therapy is a key strategy for the primary and secondary prevention of AIS and other serious cardiovascular events. However, it is unclear if continuing or stopping previous oral antihypertensive agents is beneficial in the AIS setting. Continuing prior antihypertensive agents may improve blood pressure control, however, may also lower blood pressure and worsen the perfusion of the critical hypoperfused brain tissue.

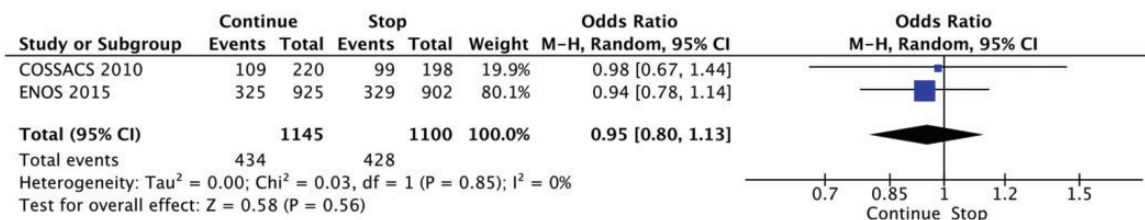
One RCT examined the effect of continuing or stopping previous blood pressure lowering therapy in AIS. The Continue Or Stop post-Stroke Antihypertensives Collaborative Study (COSSACS) was a UK multi-centre, prospective, randomised, open, blinded-endpoint trial.<sup>138</sup> In this study 763 patients who had acute stroke and were taking antihypertensive drugs were enrolled within 48 h of stroke onset. Among the overall group, 444 patients were included with AIS. In the predetermined subgroup analysis of AIS patients in COSSACS there was a benefit in death or dependency at three months (mRS scores  $\geq 3$ ) in the continue group versus the stop group (46 of 241 patients versus 55 of 203 in the stop group; relative risk reduction 0.70, 95% CI 0.51–0.99;  $p = 0.045$ ).<sup>138</sup>

ENOS was a multicentre, partial-factorial, randomised trial. In this study, 4011 patients who had stroke were enrolled within 48 h of stroke onset. Among the overall group, 928 patients with AIS were randomised to continue and 904 to stop antihypertensive treatment.<sup>37</sup>

A meta-analysis of individual patient data from the COSSACS and Efficacy of Nitric Oxide in Stroke (ENOS) trial evaluated the effect of continuing versus stopping previous blood pressure-lowering therapy on death or dependency and included 2335 patients with AIS. There were no significant associations between continuing versus stopping previous blood pressure lowering therapy and the odds of death or improved functional outcome at 3–6 months in the AIS subgroup.<sup>139</sup> Two trials<sup>37,138</sup> were included in the meta-



**Figure 5.** The effect of continuing versus temporarily stopping previous blood pressure lowering therapy on mortality at three to six months following symptom onset in patients with acute ischaemic stroke.



**Figure 6.** The effect of continuing versus temporarily stopping previous blood pressure lowering therapy on good functional outcome (defined as mRS scores 0–2) at three to six months following symptom onset in patients with acute ischaemic stroke.

analysis on continuing versus stopping previous blood pressure lowering therapy. There were no significant differences of continuing versus stopping previous blood pressure lowering therapy on mortality (OR 1.25, 95% CI 0.98 – 1.60,  $p=0.07$ ,  $I_2=0\%$ ; Figure 5) nor good functional outcome (mRS 0 – 2) (OR 0.95, 95% CI 0.83 – 1.13,  $p=0.56$ ,  $I_2=0\%$ ; Figure 6).

Table 8 provides details regarding the safety and efficacy of continuing versus temporarily stopping previous blood pressure lowering therapy in AIS patients based on published and unpublished data from the individual patient data meta-analysis.<sup>139</sup>

### Additional information

When deciding to continue or stop previous antihypertensive agents whether the patient has received reperfusion treatment, premorbid blood pressure values and the need for antihypertensive agents to maintain blood pressure within the recommended thresholds need to be considered. In case an antihypertensive is needed to maintain blood pressure values within the recommended range, continuation of previous antihypertensive agents may favour more stable blood pressure control. However, the continuation of oral antihypertensive agents may be challenging in patients with dysphagia and impaired consciousness. The route of application depends on the ability to swallow and/or the degree of consciousness.

#### Recommendation

In patients with acute ischaemic stroke, there is continued uncertainty over the benefits and risks (advantages/disadvantages) of continuing versus temporarily stopping previous blood pressure lowering therapy.

Quality of evidence: **Moderate** ⊕⊕

Strength of recommendation: -

#### Expert consensus statement

In patients with acute ischaemic stroke we suggest stopping previous oral blood pressure lowering therapy in patients with dysphagia until swallowing is restored or a nasogastric tube is in place. Vote 10 of 10

## In patients with acute intracerebral haemorrhage, does intensive blood pressure lowering with any vasodepressor drug compared to control improve outcome?

### Analysis of current evidence

The rationale behind decreasing blood pressure in acute spontaneous ICH is to reduce the driving force of haematoma expansion and thereby to prevent further clinical deterioration. Most haematoma expansion takes place within the first three hours.<sup>140</sup>

The INTensive blood pressure reduction in Acute Cerebral Haemorrhage trial (INTERACT); compared intensive lowering with a target systolic blood pressure of <140 mm Hg within 1 hour (intensive group) with a moderate lowering with a target systolic blood pressure of <180 mm Hg within 6 hours (standard group) after spontaneous ICH.<sup>141</sup> The trial recruited 404 patients. Blood pressure lowering drugs were administered according to a “stepped intravenous protocol to lower blood pressure” which was “established before the start of the study based on which drugs were available in that country” with urapidil being the most frequently used agent (47%). The primary efficacy endpoint (the mean proportional change in haematoma volume at 24 hours) was significantly smaller in the intensive lowering group (13.7%) compared to the standard group (36.3%, difference = 22.6%, 95% CI: 0.6–44.5%;  $p=0.04$ ).<sup>141</sup> There was no difference in the risk of adverse events.<sup>141</sup>

INTERACT-2 recruited 2839 patients using the identical treatment protocol as the INTERACT trial. There was no significant difference in the primary outcome (death or dependency at 90 days defined as mRS scores of 3–6) (OR with intensive treatment, 0.87; 95% CI: 0.75–1.01;  $p=0.06$ ).<sup>21</sup> However, the pre-defined secondary endpoint (ordinal analysis of 3-month mRS scores) showed significantly lower mRS scores with intensive treatment (common OR for functional worsening defined as 1-point increase across all mRS scores 0.87; 95% CI: 0.77–1.00;  $p=0.04$ ). The rates of

**Table 8.** Evidence profile table for continuing versus temporarily stopping previous blood-pressure lowering therapy in patients with acute ischemic stroke.

Certainty assessment		No. of patients				Effect					
No. of studies	Study design	Risk of bias	Inconsistency	Indirectness	Imprecision	Other considerations	Stopping previous antihypertensive therapy		Importance		
							Continuing	Absolute (95% CI)		Relative (95% CI)	Certainty
3–6 months mortality											
2	Randomised trials*	Not serious	Not serious	Not serious	Serious <sup>a</sup>	Publication bias strongly suspected <sup>b</sup>	170/1145 (14.8%)	135/1100 (12.3%)	OR 1.25 (0.98 to 1.60)	⊕⊕○○ Low	Critical
3–6 months good functional outcome (mRS scores 0–2)											
2	Randomised trials*	Not serious	Not serious	Not serious	Serious <sup>a</sup>	publication bias strongly suspected <sup>b</sup>	434/1145 (37.9%)	428/1100 (38.9%)	OR 0.95 (0.80 to 1.13)	⊕⊕○○ Low	Critical

CI: confidence interval; OR: odds ratio.

<sup>a</sup>Wide confidence intervals.

<sup>b</sup>Two studies reported this outcome

non-fatal serious adverse events did not differ between the groups.<sup>21</sup>

The Antihypertensive Treatment of Acute Cerebral Haemorrhage-II (ATACH-II) trial compared intensive (target systolic blood pressure 111–140 mm Hg) with moderate (target systolic blood pressure 140–180 mm Hg) blood pressure lowering with intravenous nicardipine in patients with spontaneous ICH within 4.5 hours of symptom onset.<sup>142</sup> The trial recruited 1000 patients and there were no differences between the intensive and moderate groups in primary endpoint (death or disability at three months defined as mRS-scores of 4–6): adjusted relative risk (RR): 1.04; 95% CI: 0.85–1.27. There was a significantly higher rate of renal adverse events within 7 days after randomisation in the intensive treatment group (9.0% vs. 4.0%,  $p=0.002$ ).<sup>142</sup> A post-hoc-analysis of ATACH-II showed a significant reduction on haematoma expansion within 24 hours and a significantly better functional outcome at three months when blood pressure lowering was initiated within 2 hours of symptom onset.<sup>143</sup>

The Controlling Hypertension After Severe Cerebrovascular Event (CHASE) trial included a mixed population with either severe AIS or ICH patients presenting with systolic blood pressure levels ranging between 150 mm Hg and 210 mm Hg.<sup>50</sup> The trial compared an individualised blood pressure lowering strategy with standard blood pressure lowering. In the subgroup of ICH ( $n=242$ ), the rates of the primary endpoint (the proportion of patients with a poor functional outcome at day 90 of enrolment defined as mRS scores of 3–6) were similar in the standard blood pressure lowering group (79/116; 68%) and in the individualised blood pressure lowering group (80/126; 63%).<sup>50</sup> There was no difference in mortality rates (12% vs. 13%).

The Controlling Hypertension and Hypotension Immediately Post Stroke (CHHIPS) included a mixed population of patients with AIS ( $n=154$ ) and ICH ( $n=25$ ) presenting with systolic blood pressure higher than 160 mm Hg on admission who were treated with labetalol ( $n=58$ ), lisinopril ( $n=58$ ) or placebo ( $n=63$ ). The primary endpoint (death or dependency at 2 weeks) occurred in 14 of 18 patients treated with labetalol or lisinopril (“active treatment”) and 3 of 7 placebo patients in the ICH subgroup. Death occurred in 2 and 0 patients in the active and placebo arms, respectively.<sup>51</sup>

In the subgroup of 629 patients with ICH included in ENOS, GTN was not associated with functional worsening (defined as a 1-point increase across all three-month mRS scores, shift analysis): adjusted common OR: 1.04; 95%CI: 0.78–1.38). There was no association between GTN and three-month mortality



(OR: 0.91; 95%CI: 0.55–1.55).<sup>144</sup> In the subgroup of 61 ICH patients treated within 6 hours, GTN was associated with lower odds of functional worsening at three months (adjusted common OR 0.19; 95% CI 0.06–0.59;  $p=0.004$ ) and lower 3-month mortality rates (7% vs. 38%,  $p=0.006$ ).<sup>144</sup>

In the subgroup of 145 patients with confirmed ICH included in the RIGHT-2 trial, patients in the GTN group tended to have worse functional outcomes at three months (adjusted common OR for 1-point increase across all three-month mRS scores 1.87, 95% CI: 0.98–3.57). More patients in the GTN died in hospital (adjusted OR 2.26, 95%CI: 1.03–4.95), but there was no difference in death at 90 days (OR 1.50, 95%CI: 0.86–2.62).<sup>29</sup> Since treatment with GTN was initiated in the ambulance prior to imaging whether these results are due to chance, confounding or the true effect of GTN remains uncertain.

Gupta and co-workers randomised 118 patients with ICH within 72 hours of symptom onset to tight blood pressure control if mean arterial pressure exceeded 115 mm Hg or to conventional blood pressure control if mean arterial pressure  $\geq 130$  mm Hg. Patients were randomised within 1 hour of admission and treatment was continued for 72 hours.<sup>145</sup> There was no difference in the primary endpoint (mRS-scores of 3–6 at 90 days) between the two treatment groups (OR: 0.70; 95%CI: 0.34–1.47).<sup>145</sup>

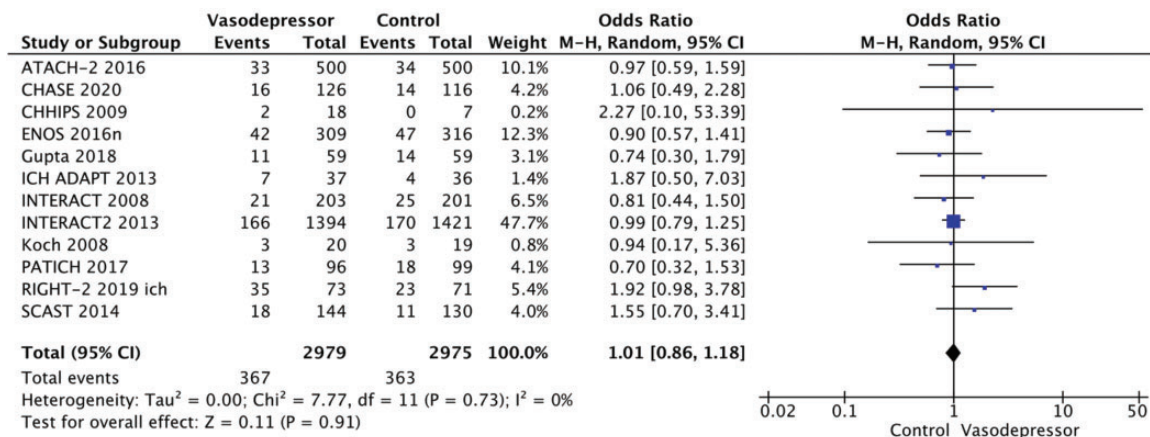
Koch and co-workers randomised 42 patients with ICH within 8 hours of symptom onset to either aggressive (mean arterial pressure  $< 110$  mm Hg) or standard treatment (mean arterial pressure 110–130 mm Hg).<sup>146</sup> Treatment duration was 48 hours. The rates of the primary endpoint (neurological deterioration within the first 48 hours) were similar in the aggressive (1/21) and standard (2/21) treatment groups. There were also no differences in 3-month mortality or haematoma

expansion (defined as an increase of more than 30% of the initial ICH volume).<sup>146</sup>

In the subgroup analysis of 274 patients with ICH in the SCAST trial, patients in the candesartan group had significantly worse functional outcome (defined as 1-point increase across all six-month mRS scores), adjusted common OR 1.61, 95% CI: 1.03–2.50.<sup>147</sup>

The Intracerebral Haemorrhage Acutely Decreasing Arterial Pressure Trial (ICH-ADAPT) evaluated the influence of systolic blood pressure lowering on cerebral blood flow (CBF). Patients with acute ICH and systolic blood pressure  $> 150$  mm Hg on admission, brain CT within 24 hours after symptom onset and no contraindication to CT angiography were randomised to systolic blood pressure target of  $< 150$  mm Hg ( $n=39$ ) compared to a systolic blood pressure target of  $< 180$  mm Hg ( $n=36$ ) to be reached within 1 hour of randomisation.<sup>148,149</sup> At 2 hours, the mean systolic blood pressure was significantly lower in the  $< 150$  mm Hg group. However, the primary endpoint (perihematoma relative CBF) was not different between the two treatment groups. There were no significant differences in mortality rates at day 30: 18% in the  $< 150$  mm Hg group and 11% in the  $< 180$  mm Hg group, and no difference in functional outcomes at 90 days.<sup>149</sup>

The Perioperative Antihypertensive Treatment in Patients With Spontaneous Intracerebral Haemorrhage (PATICH) was a single centre, assessor-blinded RCT that investigated the effect of peri-operative anti-hypertensive therapy. Adult patients with imaging-proven (brain CT or MRI) acute ICH, elevated systolic blood pressure (150–220 mm Hg) and the need for surgery within 24 hours after onset were randomised within 1 hour of admission to an intensive treatment group ( $n=100$ ; systolic blood pressure within the first hour after admission: 140–160 mm Hg, intraoperatively: 120–140 mm Hg, after



**Figure 7.** The effect of intensive blood pressure lowering with any vasodepressor drug compared to control on mortality at three to six months following symptom onset in patients with acute intracerebral haemorrhage.



**Table 9.** Evidence profile table for intensive blood pressure lowering with any vasodepressor drug in patients with acute intracerebral haemorrhage.

Certainty assessment		№ of patients				Effect		Importance				
№ of studies	Study design	Risk of bias	Inconsistency	Indirectness	Imprecision	Other considerations	№ of patients		Relative (95% CI)	Absolute (95% CI)	Certainty	Importance
							Blood pressure lowering with Vasodepressor	Control				
3–6 months mortality	12	Randomised trials	Not serious	Not serious	Serious <sup>a</sup>	Publication bias strongly suspected <sup>b</sup>	367/2979 (12.3%)	363/2975 (12.2%)	OR 1.01 (0.86 to 1.18)	1 More per 1,000 (from 15 fewer to 19 more)	⊕⊕○○ Low	Critical
3–6 months mortality <6 hours	5	Randomised trials	Not serious	Serious <sup>c</sup>	Serious <sup>a</sup>	Publication bias strongly suspected <sup>d</sup>	257/2199 (11.7%)	264/2225 (11.9%)	OR 0.95 (0.64 to 1.43)	5 Fewer per 1,000 (from 39 fewer to 43 more)	⊕○○○ Very low	Critical
3–6 months mortality ≤24 hours	3	Randomised trials	Not serious	Not serious	Serious <sup>a</sup>	Publication bias strongly suspected <sup>d</sup>	23/153 (15.0%)	25/154 (16.2%)	OR 0.91 (0.49 to 1.70)	12 fewer per 1,000 (from 76 fewer to 85 more)	⊕⊕○○ Low	Critical
3–6 months mortality <72 hours	5	Randomised trials	Not serious	Not serious	Serious <sup>a</sup>	Publication bias strongly suspected <sup>d</sup>	89/656 (13.6%)	86/628 (13.7%)	OR 1.00 (0.72 to 1.38)	0 fewer per 1,000 (from 34 fewer to 43 more)	⊕⊕○○ Low	Critical
3–6 months good functional outcome (mRS scores 0–2)	10	Randomised trials	Not serious	Not serious	Serious <sup>a</sup>	None	1285/2894 (44.4%)	1240/2903 (42.7%)	OR 1.05 (0.91 to 1.20)	12 more per 1,000 (from 23 fewer to 45 more)	⊕⊕⊕○ Moderate	Critical
3–6 months good functional outcome (mRS scores 0–2) – <6 hours	5	Randomised trials	Not serious	Not serious	Serious <sup>a</sup>	Publication bias strongly suspected <sup>d</sup>	998/2169 (46.0%)	964/2196 (43.9%)	OR 1.09 (0.97 to 1.23)	21 More per 1,000 (from 7 fewer to 51 more)	⊕⊕○○ Low	Critical
3–6 months good functional outcome (mRS scores 0–2) – <24 hours	2	Randomised trials	Not serious	Not serious	Very serious <sup>e</sup>	Publication bias strongly suspected <sup>d</sup>	37/116 (31.9%)	29/118 (24.6%)	OR 1.20 (0.42 to 3.45)	35 More per 1,000 (from 125 fewer to 283 more)	⊕○○○ Very low	Critical
3–6 months good functional outcome (mRS scores 0–2) – <72 hours	4	Randomised trials	Not serious	Not serious	Serious <sup>a</sup>	Publication bias strongly suspected <sup>d</sup>	260/638 (40.8%)	256/621 (41.2%)	OR 0.97 (0.75 to 1.26)	7 fewer per 1,000 (From 68 fewer to 57 more)	⊕⊕○○ Low	Critical
Haematoma expansion	5	Randomised trials	Not serious	Not serious	Serious <sup>a</sup>	Publication bias strongly suspected <sup>d</sup>	254/1173 (21.7%)	279/1128 (24.7%)	OR 0.84 (0.62 to 1.13)	31 Fewer per 1,000 (From 78 fewer to 23 more)	⊕⊕⊕○ Moderate	Critical

(continued)

**Table 9.** Continued.

Certainty assessment		№ of patients					Effect					
№ of studies	Study design	Risk of bias	Inconsistency	Indirectness	Imprecision	Other considerations	Blood pressure lowering with Vasodepressor	Control	Relative (95% CI)	Absolute (95% CI)	Certainty	Importance
Haematoma expansion – <6 hours												
3	Randomised trials	Not serious	Not serious	Not serious	Not serious	Publication bias strongly suspected <sup>d</sup>	239/1115 (21.4%)	269/1071 (25.1%)	OR 0.81 (0.67 to 0.99)	38 Fewer per 1,000 (from 68 fewer to 2 fewer)	⊕⊕⊕○ Moderate	Critical
Hematoma expansion – ≤24 hours												
2	Randomised trials	Not serious	Not serious	Not serious	Very serious <sup>e</sup>	Publication bias strongly suspected <sup>d</sup>	15/58 (25.9%)	10/57 (17.5%)	OR 1.66 (0.67 to 4.10)	86 More per 1,000 (From 51 fewer to 290 more)	⊕○○○ Very low	Critical
Acute Renal injury												
4	Randomised trials	Not serious	Not serious	Not serious	Very serious <sup>e</sup>	Publication bias strongly suspected <sup>d</sup>	6/947 (0.6%)	7/932 (0.8%)	OR 0.87 (0.28 to 2.74)	1 Fewer per 1,000 (from 5 fewer to 13 more)	⊕○○○ Very low	Important

CI: confidence interval; OR: odds ratio.

<sup>a</sup>Wide confidence intervals.

<sup>b</sup>Five or less studies reporting this outcome.

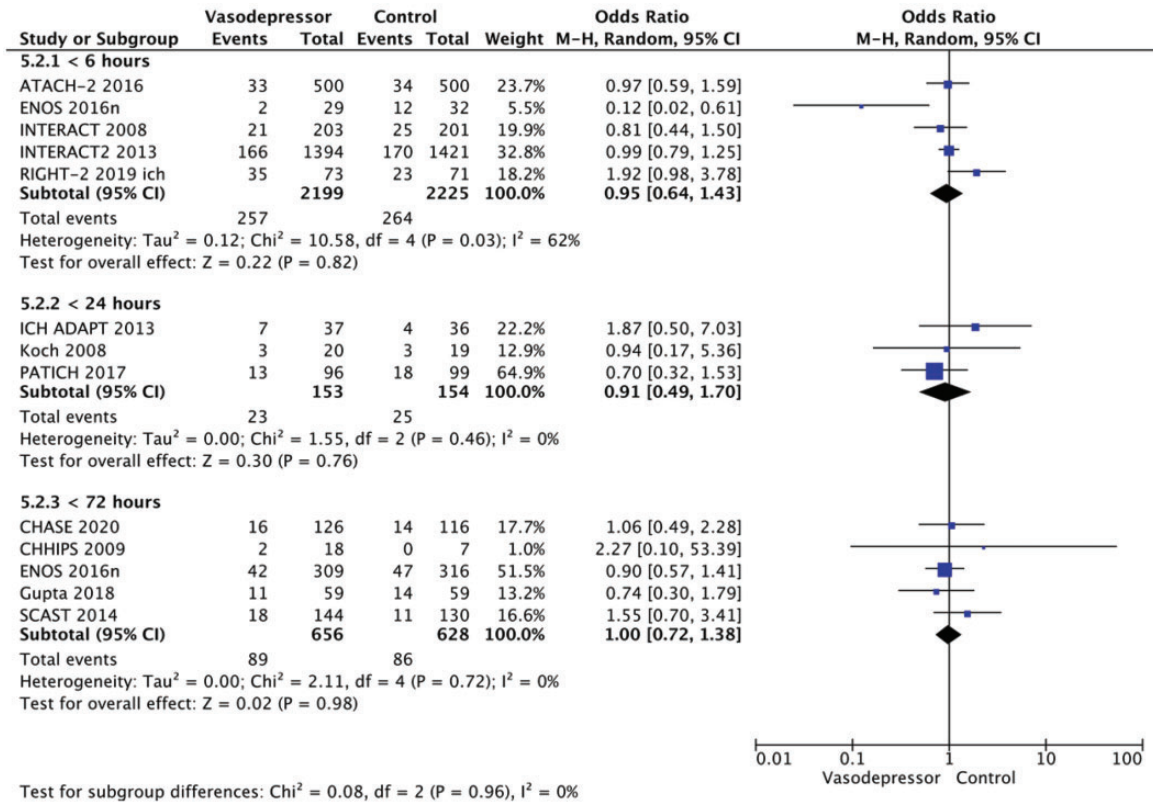
<sup>c</sup>Significant heterogeneity,  $I^2 \geq 62\%$ .

<sup>d</sup>Very wide confidence intervals.

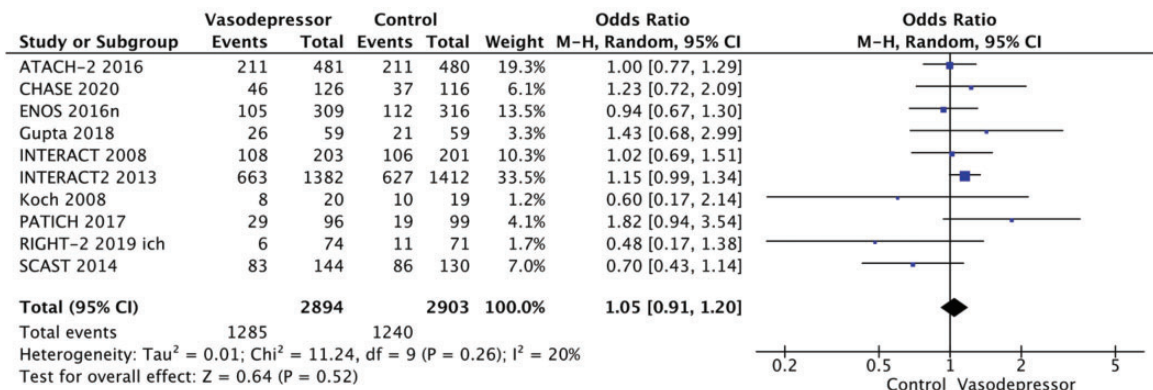
PICO 8: In patients with acute intracerebral haemorrhage, does continuing versus temporarily stopping previous oral antihypertensive therapy improve outcome?

operation: 120–140 mm Hg for 7 days) or conservative treatment group (n = 101; perioperative systolic blood pressure: 140–180 mm Hg, intraoperatively systolic blood pressure: 90–140 mm Hg).<sup>150</sup> The primary endpoint was the incidence of re-haemorrhage within 7 days after randomisation “defined as a greater

postoperative haematoma volume, a difference of ≤5 mL between the pre- and postoperative haematoma volumes or a difference of ≥5 mL in haematoma volumes between the first postoperative computed tomography and the subsequent computed tomography”. The re-haemorrhage rates did not differ between the



**Figure 8.** The effect of intensive blood pressure lowering with any vasodepressor drug compared to control on mortality at three to six months following symptom onset in in subgroups stratified by time to treatment (trials enrolling patients within 6 hours, trials enrolling patients within 24 hours after exclusion of trials enrolling patients within 6 hours, and trials enrolling patients within 72 hours after excluding trials enrolling within 24 hours).



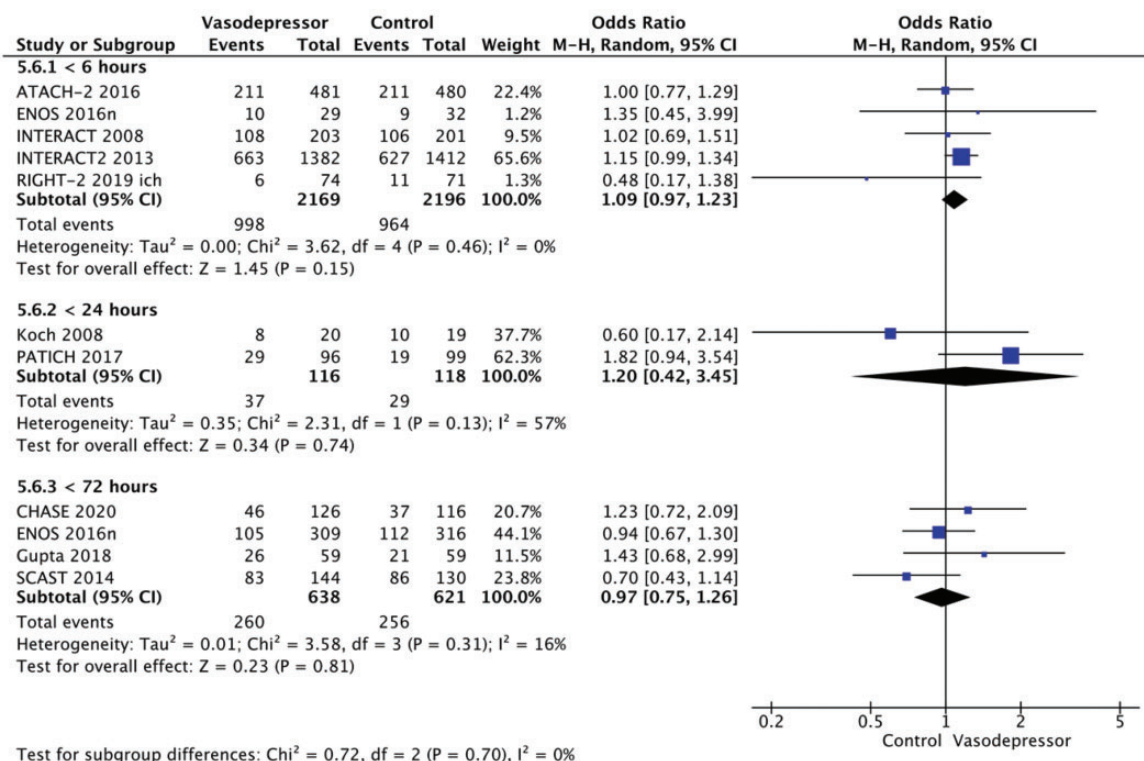
**Figure 9.** The effect of intensive blood pressure lowering with any vasodepressor drug compared to control on good functional outcome (defined as mRS scores 0–2 at three to six months following symptom onset) in patients with acute intracerebral haemorrhage.

intensive (11%) and conservative (14%) groups. The mortality rates at 90 days were also similar.<sup>150</sup>

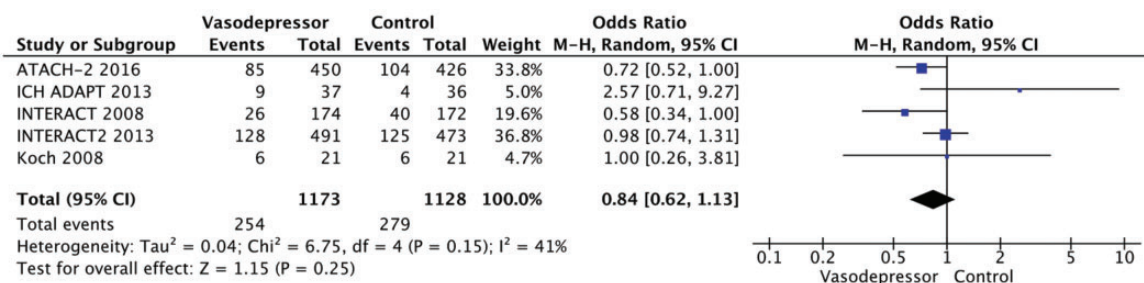
Twelve RCTs were included in the meta-analysis of blood pressure lowering with any vasodepressor drug compared with control on mortality at 3-6 months, and there were no differences between the groups (OR 1.01 [95%CI: 0.86, 1.18];  $I^2=0\%$ ; Figure 7, Table 9).<sup>21,29,37,50,51,141,142,144,145-147,149,150</sup> Treatment time window varied between 3 and 72 hours. Subgroup analyses of mortality according to time to treatment revealed no significant

associations between blood pressure lowering and mortality at three to six months at different time windows (Figure 8).

Data on good functional outcome defined as mRS scores of 0-2 at three to six months were available from 10 RCTs.<sup>21,29,50,141,142,144-147,150</sup> Blood pressure lowering with any vasodepressor was associated with no benefit on good functional outcome (OR 1.05, 95%CI: 0.91-1.20;  $I^2=20\%$ ; Figure 9, Table 9) Subgroup analyses of good functional outcome (mRS scores 0-2) at three to six months according to treatment time

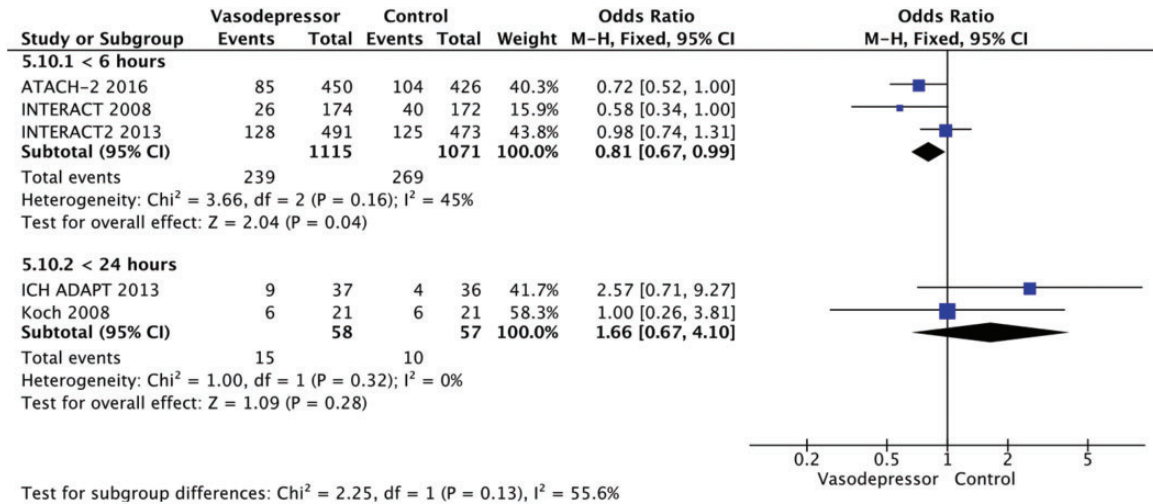


**Figure 10.** The effect of intensive blood pressure lowering with any vasodepressor drug compared to control on good functional outcome (defined as mRS scores 0-2 at three to six months following symptom onset) in subgroups stratified by time to treatment (trials enrolling patients within 6 hours, trials enrolling patients within 24 hours after exclusion of trials enrolling patients within 6 hours, and trials enrolling patients within 72 hours after excluding trials enrolling within 24 hours).



**Figure 11.** The effect of intensive blood pressure lowering with any vasodepressor drug compared to control on haematoma expansion.





**Figure 12.** The effect of intensive blood pressure lowering with any vasodepressor drug compared to control on haematoma expansion in subgroups stratified by time to treatment (trials enrolling patients within 6 hours, trials enrolling patients within 24 hours after exclusion of trials enrolling patients within 6 hours).

window revealed no significant associations between blood pressure lowering and good functional outcomes at three to six months at different time windows (Figure 10, Table 9).

Data on haematoma expansion were available from 5 RCTs.<sup>21,141,142,146,149</sup> Overall, intensive blood pressure lowering treatment did not reduce haematoma expansion (RR = 0.84, 95%CI:0.62–1.13;  $I^2 = 41\%$  Figure 11, Table 9). In the subgroup analysis of trials randomising ICH patients within 6 hours from symptom onset (Figure 12, Table 9) intensive blood pressure lowering was associated with lower likelihood of haematoma expansion: OR = 0.81;95%CI: 0.67–0.99;  $I^2 = 45\%$ . There was no marked effect of antihypertensive treatment when time treatment window was  $\leq 24$  hours (Figure 12). These data support a potential biological effect of blood pressure lowering therapy on haematoma expansion.

Acute renal injury has been described as serious adverse event of intensive blood pressure lowering in spontaneous ICH. Analysis of the four trials reported that acute renal injury rates in the treatment arms revealed no association between intensive blood pressure lowering and acute renal injury in ICH (OR 0.87; 95%CI: 0.28–2.74, Table 9).

Table 9 provides the evidence profile regarding the safety and efficacy of intensive blood pressure lowering in acute ICH. The existing data is of moderate quality and predominantly concerns conscious patients, who do not require surgical intervention. Furthermore, there are limited data on patients treated very early from ICH onset (minutes to hours). Finally, it should

be noted that ATACH-II excluded patients with haematoma volumes  $>60 \text{ cm}^3$ ,<sup>142</sup> while INTERACT-2 excluded patients if “they had a massive haematoma with a poor prognosis, or if early surgery to evacuate the haematoma was planned”.<sup>21</sup> Thus, the presented associations predominantly correspond to acute ICH patients with small to moderate haematoma volumes.

### Additional information

Burgess and co-workers performed a prospective cohort study on 448 patients with acute spontaneous ICH and looked at the effect of the extent of blood lowering on the occurrence of acute renal injury in patient with and without chronic kidney disease.<sup>151</sup> The risk of acute renal injury was associated with  $>90 \text{ mm Hg}$  reduction of baseline systolic blood pressure.

In order to achieve rapid and controlled blood pressure lowering, drugs used need to be fast-acting with a short half-life time to reduce the risk of excessive blood pressure lowering. Most of the currently used antihypertensives (urapidil, labetalol, esmolol, nicardipine) do only partially fulfil these criteria. Clevidipine is a calcium channel antagonist with a half-life time of 1.5 minutes that may be effective in blood pressure control of patients with acute ICH. Graffagnino and co-workers published a very small prospective case-series of 35 patients with acute ICH treated with clevidipine.<sup>152</sup> Mean time to target pressure between 140 and 160 mm Hg was 5.5 minutes and mean ICH volume increase was negligible (0,01 ml).

In conclusion, early (<6 hours from symptom) lowering of blood pressure leads to a reduction of haematoma expansion in acute ICH patients. Haematoma expansion is strongly and independently associated with adverse functional outcome at three months in acute ICH.<sup>153</sup> The question remains: Why does reduction of haematoma expansion not translate into a clinical benefit? Our hypothesis is as follows: The clinical benefit in ICH is primarily derived by preventing lesion increase (= haematoma expansion). An individual patient data meta-analysis of 5435 acute ICH patients identified two strong predictors of haematoma expansion. First, the time from onset to first brain CT and second, the volume of baseline ICH.<sup>140</sup> Most haematoma expansion occurred within the first three hours after onset of ICH. The probability of haematoma expansion increased with the volume of the initial lesion up to 75 ml.<sup>140</sup> In the five RCTs on blood pressure lowering for hyperacute ICH, the mean time from ICH onset to treatment in was 5.7 hours. This timeframe is at least 2 hours longer than the time period where haematoma expansion most commonly occurs.<sup>21,141,142,146,149</sup>

The mean volume of the initial lesion in the five RCTs was 14 ml, which may be too small to show a clinically meaningful change by preventing haematoma expansion.<sup>21,141,142,146,149</sup> Since the evidence available is primarily from patients with small haematoma volume, uncertainty remains regarding the effect of blood pressure lowering in patients with large initial haematoma volumes. Also, it should be noted that in addition to haematoma expansion there are other factors impacting 3-month functional outcome in acute ICH including neurocritical care, location of baseline haematoma volume, end-of-life health policies across different countries and these factors may have moderated or diluted the potential association of early (<6 h) intensive blood pressure lowering and functional outcome at three months.

A robust marker of ongoing bleeding, studied extensively over the past years, is the CT angiography spot sign.<sup>153,154</sup> The spot sign is commonly assumed to represent continued bleeding (e.g., contrast extravasation visualised on CTA after contrast bolus injection) from ruptured vessels surrounding the initial haematoma. The spot sign has been associated with both haematoma expansion and poor clinical outcomes in acute ICH patients.<sup>155</sup> SCORE-IT (Spot Sign Score in Restricting ICH Growth) is a preplanned prospective observational study nested in the ATACH-II RCT including consecutive patients with primary ICH who underwent a CT angiography within 8 hours from onset.<sup>156</sup> A total of 133 patients were included in this preplanned analysis. Of these, 40% had a spot sign, and 20% experienced haematoma expansion. After

adjustment for potential confounders, intensive blood pressure treatment was not associated with a significant reduction of haematoma expansion (relative risk: 0.83; 95%CI: 0.27–2.51;  $p=0.74$ ) or functional outcome (relative risk of 90-day mRS score  $\geq 4$ , 1.24; 95%CI: 0.53–2.91;  $p=0.62$ ) in spot sign-positive patients.

#### Recommendation

In patients with acute (<24 hours) intracerebral haemorrhage there is continued uncertainty over the benefits and risks (advantages/disadvantages) of intensive blood pressure lowering on functional outcome.

Quality of evidence: **Moderate** ⊕⊕⊕

Strength of recommendation: -

In patients with hyperacute (<6 hours) intracerebral haemorrhage, we suggest lowering blood pressure to below 140 mm Hg (and to keep it above 110 mm Hg) to reduce haematoma expansion.

Quality of evidence: **Moderate** ⊕⊕⊕

Strength of recommendation: **Weak** ↑

#### Expert consensus statement

In patients with acute intracerebral haemorrhage, we suggest initiating antihypertensive treatment as early as possible and ideally within 2 hours of symptom onset. The decrease of systolic blood pressure should not exceed 90 mm Hg from baseline values. Vote 10 of 10.

In patients with acute intracerebral haemorrhage, we suggest lowering blood pressure according to recommended levels beyond 6 hours after onset of treatment for at least 24 hours and up to 72 hours to reduce haematoma expansion. Vote 10 of 10.

### In patients with acute intracerebral haemorrhage, does continuing versus temporarily stopping previous oral antihypertensive therapy improve outcome?

#### Rationale

Blood pressure lowering therapy is a key strategy for the primary and secondary prevention of ICH and other serious cardiovascular events. However, it is unclear if it is better to continue or temporarily stop prior ongoing antihypertensive agent(s) in the setting of an acute ICH. One theoretical argument in favour of continuing blood pressure lowering therapy in acute ICH is related to more effective blood pressure control that in turn may limit haematoma expansion. On the other hand, it may be argued that continuing oral

antihypertensive agents may worsen functional outcome due to compromise in cerebral blood flow and perihematoma perfusion; furthermore, it may increase the risk of aspiration pneumonia.

**Analysis of current evidence.** One RCT, ENOS, included 246 patients with acute ICH and elevated systolic blood pressure (140–220 mm Hg) who were previously on antihypertensive therapy. The patients were randomised to continue or stop previous blood pressure lowering treatment for seven days.<sup>157</sup> There was no difference in mRS scores between the treatment groups at day 90 (common OR for worse functional outcome, defined by 1-point increase across all mRS grades in the group that continued blood pressure lowering treatment 0.92; 95% CI: 0.45–1.89;  $p=0.83$ ). There was no significant difference in mortality between the 2 groups at day 90 (16.0% and 18.3% in the continue versus stop groups, respectively).<sup>157</sup> There was no information on haematoma expansion.

A meta-analysis of individual patient data from COSSACS and the ENOS trials evaluated the effect of continuing versus stopping temporarily previous blood pressure-lowering therapy on death or dependency in 2860 patients with acute stroke.<sup>139</sup> The meta-analysis indicated no significant association of continuing versus stopping previous blood pressure lowering therapy with the odds of death or the improved functional outcome in the subgroup of patients with ICH (Table 10).<sup>139</sup> Two trials<sup>37,138</sup> were included in the meta-analysis on continuing versus stopping previous blood pressure lowering therapy. There were no significant differences between the continuing versus stopping previous blood pressure lowering treatment on mortality (OR 0.93, 95% CI 0.50 – 1.72,  $p=0.81$ ,  $I^2=0\%$ ; Figure 13) nor on good functional outcome (mRS 0–2) (OR 1.16, 95 % CI 0.68 – 1.98,  $p=0.57$ ,  $I^2=0\%$ ; Figure 14).

Table 10 provides details regarding the safety and efficacy of continuing versus temporarily stopping previous blood-pressure lowering therapy in patients with acute ICH based on published and unpublished data from the individual patient data meta-analysis.<sup>139</sup>

**Additional information**

When deciding to continue or stop temporarily previous antihypertensive agents individual blood pressure levels of ICH patients and the need to use or not to use antihypertensive agents to maintain these levels within the range recommended for patients with acute ICH needs to be considered. The most common situation in clinical practice is the need of a blood pressure lowering therapy to maintain blood pressure levels within the recommended range. In this case continuation of

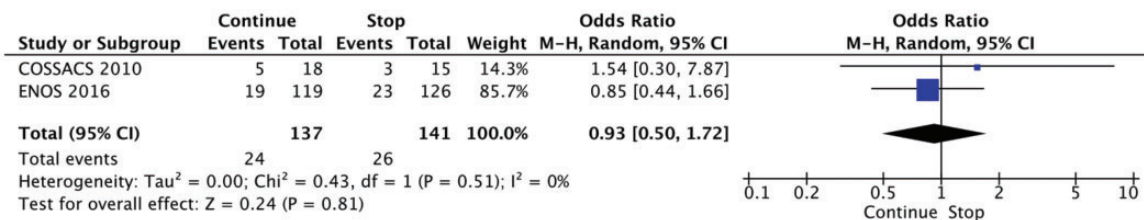
**Table 10.** Evidence profile table for continuing versus temporarily stopping previous blood-pressure lowering therapy in patients with acute intracerebral hemorrhage.

No. of studies	Study design	Risk of bias	Inconsistency	Indirectness	Imprecision	Other considerations	No. of patients		Effect			Certainty	Importance
							Continuing	Stopping previous antihypertensive therapy	Relative (95% CI)	Absolute (95% CI)			
2	3–6 months mortality Randomised trials	Not serious	Not serious	Not serious	Serious <sup>a</sup>	Publication bias strongly suspected <sup>b</sup>	24/137 (17.5%)	26/141 (18.4%)	OR 0.93 (0.50 to 1.72)	11 Fewer per 1,000 (from 83 fewer to 96 more)	⊕⊕○○ Low	Critical	
2	3–6 month good functional outcome (mRS scores 0–2) Randomised trials	Not serious	Not serious	Not serious	Serious <sup>a</sup>	Publication bias strongly suspected <sup>b</sup>	40/137 (29.2%)	37/141 (26.2%)	OR 1.16 (0.68 to 1.98)	30 More per 1,000 (From 68 fewer to 151 more)	⊕⊕○○ Low	Critical	

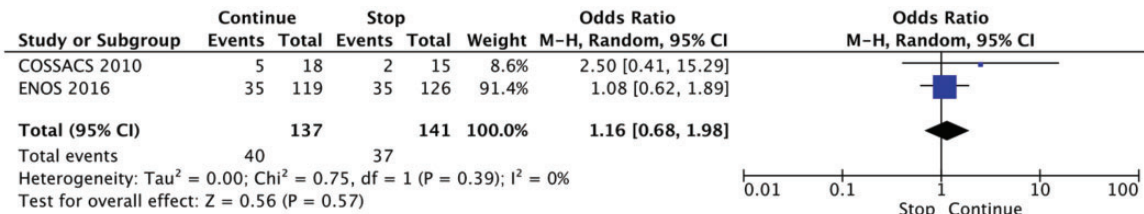
CI: confidence interval; OR: odds ratio.

<sup>a</sup>Wide confidence intervals.

<sup>b</sup>Two studies reported this outcome.



**Figure 13.** The effect of continuing versus temporarily stopping previous blood pressure lowering therapy on mortality at three to six months following symptom onset in patients with acute intracerebral haemorrhage.



**Figure 14.** The effect of continuing versus temporarily stopping previous blood pressure lowering therapy on good functional outcome (defined as mRS scores 0–2) at three to six months following symptom onset in patients with acute intracerebral haemorrhage.

previous antihypertensive agents may favour more stable blood pressure control. However, the continuation of oral antihypertensive agents may be challenging in patients with dysphagia and impaired consciousness. The route of application depends on the ability to swallow and/or the degree of consciousness.

**Recommendation**

In patients with acute intracerebral haemorrhage there is continued uncertainty over the benefits and risks (advantages/disadvantages) of continuing versus temporarily stopping previous blood pressure lowering therapy.

Quality of evidence: **Moderate** ⊕⊕⊕

Strength of recommendation: -

**Expert consensus statement**

In patients acute intracerebral haemorrhage who need blood pressure lowering therapy to maintain blood pressure within the recommended range and who do not have swallowing problems, we suggest continuation of prior oral antihypertensive agents. Vote 10 of 10.

In patients with acute intracerebral haemorrhage who need blood pressure lowering therapy to maintain blood pressure within the recommended range and who have dysphagia or decreased level of consciousness, we suggest temporarily stopping previous oral hypertensive therapy and using intravenous antihypertensive agents until swallowing is restored or a nasogastric tube is in place. Vote 10 of 10.

**Discussion**

This guideline document was developed using the GRADE methodology and aims to assist physicians in the management of blood pressure in AIS and ICH. All recommendations and Expert consensus statements are summarised in Table 11.

We have based all our recommendations on RCTs or individual patient data meta-analyses whenever possible, but for certain PICO questions most of the evidence is based on observational studies, with the limitations this type of evidence entails. We provide analyses in AIS and in ICH subgroups separately. Although many of the trials covered in our guideline enrolled patients with both ischaemic and haemorrhagic stroke subtypes, we believe that it is appropriate to generate separate recommendations for these two subtypes due to the differences in the pathophysiology. In the AIS subgroup we have made specific recommendations for patients undergoing acute reperfusion therapies with intravenous alteplase, and/or endovascular treatment. These are two specific settings where discussions regarding appropriate blood pressure management arise in most acute stroke departments daily. The use of vasopressors is increasing in the management of low blood pressure in AIS, especially in patients undergoing endovascular procedure where large drops in blood pressure is detrimental and in patients with fluctuating symptoms with an assumed haemodynamic aetiology. We therefore provided specific recommendations for these additional settings.



**Table 11.** Evidence table for ESO Guidelines on blood pressure management in acute ischaemic stroke and intracerebral haemorrhage

PICO Question	Recommendations	Expert consensus statement
PICO 1: In patients with suspected acute stroke, does pre-hospital blood pressure lowering with any vasodepressor drug compared to no drug improve outcome?	In patients with suspected stroke we suggest against routine blood pressure lowering in the pre-hospital setting. Quality of evidence: <b>Moderate</b> ⊕⊕ Strength of recommendation: <b>Weak</b> ↓?	Due to the potential harm in patients with intracerebral haemorrhage prehospital treatment with glyceryl trinitrate should be avoided. Vote 9 of 10.
PICO 2: In hospitalised patients with acute ischaemic stroke not treated with reperfusion therapies (intravenous thrombolysis or mechanical thrombectomy), does blood pressure lowering with any vasodepressor drug compared to no drug improve outcome?	In hospitalised patients with acute ischaemic stroke and blood pressure < 220/110 mmHg not treated with intravenous thrombolysis or mechanical thrombectomy, we suggest against the routine use of blood pressure lowering agents at least in first 24 hours following symptom onset, unless this is necessary for a specific comorbid condition. Quality of evidence: <b>Moderate</b> ⊕⊕ Strength of recommendation: <b>Weak</b> ↓?	In patients with acute ischaemic stroke not treated with intravenous thrombolysis or mechanical thrombectomy and blood pressure > 220/120 mmHg, careful blood pressure reduction (<15% systolic blood pressure reduction in 24 hours) is reasonable and likely to be safe. No specific blood pressure lowering agent can be recommended. Vote 10 of 10.
PICO 3: In hospitalised patients with acute ischaemic stroke and undergoing intravenous thrombolysis (with or without mechanical thrombectomy), does blood lowering therapies compared to control improve outcome?	In patients with acute ischaemic stroke undergoing treatment with intravenous thrombolysis (with or without mechanical thrombectomy) we suggest maintaining blood pressure below 185/110 mmHg before bolus and below 180/105 mmHg after bolus, and for 24 hours after alteplase infusion. No specific blood pressure-lowering agent can be recommended. Quality of evidence: <b>Very low</b> ⊕ Strength of recommendation: <b>Weak</b> ↑? In patients with acute ischaemic stroke undergoing treatment with intravenous thrombolysis (with or without mechanical thrombectomy) we suggest against lowering systolic blood pressure to a target of 130-140mmHg compared to <180mmHg during the first 72 hours following of symptom onset. Quality of evidence: <b>Moderate</b> ⊕⊕ Strength of recommendation: <b>Weak</b> ↓?	
PICO 4: In patients with acute ischaemic stroke caused by large vessel occlusion and undergoing mechanical thrombectomy (with or without intravenous thrombolysis), does blood pressure lowering with any vasodepressor drug compared to no drug improve outcome?	In patients with acute ischaemic stroke due to large vessel occlusion undergoing mechanical thrombectomy (with or without intravenous thrombolysis) we suggest keeping blood pressure below 180/105 mmHg during, and 24 hours after, mechanical thrombectomy. No specific blood pressure-lowering agent can be recommended. Quality of evidence: <b>Very low</b> ⊕ Strength of recommendation: <b>Weak</b> ↑?	In patients with acute ischaemic stroke due to large vessel occlusion who achieve successful reperfusion defined as modified Thrombolysis in Cerebral Infarction grade of 3 following mechanical thrombectomy we suggest against induced hypertension. Vote 10 of 10

(continued)

Table 11. Continued.

PICO Question	Recommendations	Expert consensus statement
	<p>In patients with acute ischaemic stroke due to large vessel occlusion we suggest against actively reducing systolic blood pressure &lt; 130mmHg during the first 24 hours following successful mechanical thrombectomy</p> <p>Quality of evidence: <b>Moderate</b> ⊕⊕</p> <p>Strength of recommendation: <b>Weak</b> ↓?</p> <p>In patients with acute ischaemic stroke due to large vessel occlusion undergoing treatment with mechanical thrombectomy (with or without intravenous thrombolysis) systolic blood pressure drops should be avoided.</p> <p>Quality of evidence: <b>Very low</b> ⊕</p> <p>Strength of recommendation: <b>Strong</b> ↓↓</p>	
PICO 5: In patients with acute ischaemic stroke not treated with reperfusion therapies (intravenous thrombolysis or mechanical thrombectomy) who experience clinical deterioration, we suggest against the routine use of vasopressor drugs to increase blood pressure.	<p>In patients with acute ischaemic stroke not treated with reperfusion therapies (intravenous thrombolysis or mechanical thrombectomy) who experience clinical deterioration, we suggest against the routine use of vasopressor drugs to increase blood pressure.</p> <p>Quality of evidence: <b>Very low</b> ⊕</p> <p>Strength of recommendation: <b>Weak</b> ↓↓</p>	<p>In patients with acute ischaemic stroke not treated with reperfusion therapies (intravenous thrombolysis or mechanical thrombectomy) and with clinical deterioration where a haemodynamic mechanism is suspected or shown to be directly responsible for the deterioration, we suggest:</p> <ul style="list-style-type: none"> <li>• stopping existing blood pressure lowering therapy,</li> <li>• administering intravenous fluids and</li> <li>• introducing non-pharmacological procedures to raise blood pressure before considering</li> <li>• careful use of vasopressor agents to increase blood pressure with close monitoring of blood pressure values.</li> </ul> <p>Vote 10 of 10.</p>
PICO 6: In patients with acute ischaemic stroke, does continuing versus temporarily stopping previous oral blood pressure lowering therapy improve outcome?	<p>In patients with acute ischaemic stroke, there is continued uncertainty over the benefits and risks (advantages/disadvantages) of continuing versus temporarily stopping previous blood pressure lowering therapy.</p> <p>Quality of evidence: <b>Moderate</b> ⊕⊕</p> <p>Strength of recommendation: -</p>	<p>In patients with acute ischaemic stroke we suggest stopping previous oral blood pressure lowering therapy in patients with dysphagia until swallowing is restored or a nasogastric tube is in place. Vote 10 of 10</p>

(continued)

Table 11. Continued.

PICO Question	Recommendations	Expert consensus statement
PICO 7: In patients with acute intracerebral haemorrhage, does intensive blood pressure lowering with any vasodepressor drug compared to control improve outcome?	<p>In patients with acute (&lt;24 hours) intracerebral haemorrhage there is continued uncertainty over the benefits and risks (advantages/disadvantages) of intensive blood pressure lowering on functional outcome. Quality of evidence: Moderate⊕⊕⊕ Strength of recommendation: -</p> <p>In patients with hyperacute (&lt;6 hours) intracerebral haemorrhage, we suggest lowering blood pressure to below 140 mmHg (and to keep it above 110 mmHg) to reduce haematoma expansion. Quality of evidence: Moderate⊕⊕⊕ Strength of recommendation: Weak ↑</p>	<p>In patients with acute intracerebral haemorrhage, we suggest initiating antihypertensive treatment as early as possible and ideally within 2 hours of symptom onset. The decrease of systolic blood pressure should not exceed 90 mmHg from baseline values. Vote 10 of 10.</p> <p>In patients with acute intracerebral haemorrhage, we suggest lowering blood pressure according to recommended levels beyond 6 hours after onset of treatment for at least 24 hours and up to 72 hours to reduce haematoma expansion. Vote 10 of 10.</p>
PICO 8: In patients with acute intracerebral haemorrhage, does continuing versus temporarily stopping previous oral antihypertensive therapy improve outcome?	<p>In patients with acute intracerebral haemorrhage there is continued uncertainty over the benefits and risks (advantages/disadvantages) of continuing versus temporarily stopping previous blood pressure lowering therapy. Quality of evidence: Moderate⊕⊕⊕ Strength of recommendation: -</p>	<p>In patients acute intracerebral haemorrhage who need blood pressure lowering therapy to maintain blood pressure within the recommended range and who do not have swallowing problems, we suggest continuation of prior oral antihypertensive agents. Vote 10 of 10.</p> <p>In patients with acute intracerebral haemorrhage who need blood pressure lowering therapy to maintain blood pressure within the recommended range and who have dysphagia or decreased level of consciousness, we suggest temporarily stopping previous oral hypertensive therapy and using intravenous antihypertensive agents until swallowing is restored or a nasogastric tube is in place. Vote 10 of 10.</p>

For ICH we further classified our recommendations on blood pressure management according to thresholds, timing and agent/strategy.

The strengths of the current guideline are the systematic search of the literature and use of the GRADE methodology to provide guidance for clinicians. Our group conducted multiple analyses of the available data using a strict meta-analytical approach. Nevertheless, despite making our recommendations based on randomised controlled data in different stroke subgroups, the level of evidence is consistently very low, low or moderate. This exemplifies the complexity of blood pressure management in acute stroke settings where epidemiological evidence, pathophysiological evidence and data from RCTs are conflicting. This also likely reflects the heterogeneity of the trials included regarding timing of blood pressure management, inclusion criteria and blood pressure lowering strategies. To provide guidance for clinical practice we made nine expert consensus statements in addition to the official recommendations due to the equipoise in clinical evidence. These statements have been voted on among the working group. All the statements had excellent agreement (10/10 in 8 statement and 9/10 in one statement) among the group members.

Many questions regarding blood pressure management in acute stroke remain unanswered. First, in both patients with AIS and ICH blood pressure is a highly individual parameter and the association between blood pressure and outcome is likely to be multifactorial. The “one-target fits all” may not be appropriate in acute stroke settings, and future trials should consider premorbid hypertension, baseline blood pressure values and relative reductions in baseline blood pressure rather than arbitrary absolute blood pressure targets. As shown in the evidence presented in these guidelines, the detrimental effect of high blood pressure on both short- and long-term outcome in AIS is not altered by blood pressure lowering. There are also multiple stroke related factors contributing to elevated blood pressure levels in AIS including ischaemic stroke subtype, recanalisation status and collateral flow that should be considered in the design of future trials. In addition, future trials should differentiate between the different blood pressure management strategies before, during and after successful reperfusion evaluating personalised autoregulation-oriented blood pressure thresholds.

For patients with acute ICH we have shown effects of blood pressure lowering on haematoma growth within a narrow time window of 6 hours but not on

functional outcome. Overall, haematoma size in the patients included in the trials was small and treatment was in some of the trials initiated treatment up to 48 hours after symptom onset, which is likely too late to influence outcome. There is also the possibility that manipulating blood pressure is not effective enough alone to influence functional outcome but may work synergistically as part of a bundle of care that can carry a greater impact on functional outcome. Future trials should investigate the efficacy of blood pressure lowering therapies in the hyperacute time window of first 6 hours following symptom onset in patients with acute ICH and evaluate blood pressure lowering agents that reduce blood pressure variability in addition to absolute blood pressure levels.

### Plain language summary

The majority of patients with stroke either due to blood clots (ischaemic stroke) or brain bleeds (intracerebral haemorrhage) have high blood pressure both in the ambulance and on admission to the hospital. We know that high blood pressure in the acute phase of stroke can lead to death, new strokes and poor functional outcome. Despite this, we don't know whether we should treat high blood pressure as the damaged brain might need higher blood pressure to ensure adequate blood flow. The guideline authors provide ten recommendation, the most important being:

1. Blood pressure in patients with suspected stroke should not be treated in the ambulance
2. If the stroke is due to a blood clot in the arteries:
  - a. Blood pressure should not be treated unless the blood pressure is very high (systolic blood pressure >220 mm Hg) or if the patients can receive treatment with clot-busting drugs (thrombolytics) or clot-fishing (endovascular treatment).
  - b. Giving drugs to increase blood pressure should be avoided in the majority of patients
  - c. If the patient is already under treatment with blood pressure lowering drugs at the time of admission these should be stopped in patients who cannot swallow
3. If the stroke is caused by a brain bleed:
  - a. Elevated blood pressure should be treated as early as possible after symptom onset
  - b. If patients are already under treatment with blood pressure drugs these should be continued during the hospital stay



### Declaration of conflicting interests

Declarations of conflicts of interests are outlined in table 1.

### Funding

This research received no specific grant from any funding agency in the public, commercial, or not-for-profit sectors.

### Informed consent

Not applicable.

### Ethical approval

Not applicable

### Guarantor

ECS.


### Contributorship


ECS and GT co-chaired the working group, prepared the first overall draft and the revised manuscript following reviewer comments. Avtar Lal did the initial literature search. All authors contributed to screen of abstracts and full manuscripts. Avtar Lal did the data extraction for PICO 1, 2, 5 and 7. GT for PICO 3 and 4. SS for PICO 6 and 8. ECS, UF and PMB were responsible for PICO 1. LM, ECS and SS were responsible for PICO 2. GT, PMB, UF and LM were responsible for PICO 3. GT, PMB and UF for PICO 4. ECS, SS and UF for PICO 5. SS, HC, ECS, DG and PMB for PICO 6. TS, GT, DG, CA and HC for PICO 7. SS, GT, DG, TS and CA for PICO 8. All authors critically revised the manuscript.


### Acknowledgements


The late Professor Eivind Berge was part of the initial guideline working group. We are thankful for his contribution and ECS missed his mentorship and attention to detail in the final stages of the work. We are grateful for the assistance of Guillaume Turc as the chair of the ESO guideline board for valuable advice and Luzia Balmer from the ESO head office. Finally, we extend our big thanks to Kailash Krishnan and Lisa Woodhouse for assisting with data from RIGHT-2, ENOS and Continue-Stop individual patient data meta-analysis. PMB is Stroke Association Professor of Stroke Medicine and an emeritus NIHR Senior Investigator.

### ORCID iDs

Else Charlotte Sandset  <https://orcid.org/0000-0003-4312-4778>

Craig S Anderson  <https://orcid.org/0000-0002-7248-4863>

Simona Sacco  <https://orcid.org/0000-0003-0651-1939>

Thorsten Steiner  <https://orcid.org/0000-0002-5080-8222>

### Supplemental material

Supplemental material for this article is available online.

### References

1. Fischer U, Cooney MT, Bull LM, et al. Acute post-stroke blood pressure relative to premorbid levels in intracerebral haemorrhage versus major ischaemic stroke: a population-based study. *Lancet Neurol* 2014; 13: 374–384.
2. Bath PM, Appleton JP, Krishnan K, et al. Blood pressure in acute stroke: to treat or not to treat: that is still the question. *Stroke* 2018; 49: 1784–1790.
3. Carcel C and Anderson CS. Timing of blood pressure lowering in acute ischemic stroke. *Curr Atheroscler Rep* 2015; 17: 42.
4. Jusufovic M, Mishra NK, Lansberg MG, et al. Blood pressure management in acute stroke. *Curr Hypertens Rev* 2016; 12: 121–126.
5. Qureshi AI. Acute hypertensive response in patients with stroke: pathophysiology and management. *Circulation* 2008; 118: 176–187.
6. Bath PM and Krishnan K. Interventions for deliberately altering blood pressure in acute stroke. *Cochrane Database Syst Rev* 2014; 10: CD000039.
7. Appiah KO, Minhas JS and Robinson TG. Managing high blood pressure during acute ischemic stroke and intracerebral hemorrhage. *Curr Opin Neurol* 2018; 31: 8–13.
8. Mistri AK, Robinson TG and Potter JF. Pressor therapy in acute ischemic stroke: systematic review. *Stroke* 2006; 37: 1565–1571.
9. Vemmos KN, Tsvigoulis G, Spengos K, et al. U-shaped relationship between mortality and admission blood pressure in patients with acute stroke. *J Intern Med* 2004; 255: 257–265.
10. Leonardi-Bee J, Bath PM, Phillips SJ, et al. Blood pressure and clinical outcomes in the international stroke trial. *Stroke* 2002; 33: 1315–1320.
11. Bangalore S, Schwamm L, Smith EE, et al.; Get With the Guidelines-Stroke Steering Committee and Investigators. Blood pressure and in-hospital outcomes in patients presenting with ischaemic stroke. *Eur Heart J* 2017; 38: 2827–2835.
12. Okumura K, Ohya Y, Maehara A, et al. Effects of blood pressure levels on case fatality after acute stroke. *J Hypertens* 2005; 23: 1217–1223.
13. The European Stroke Organisation (ESO). Executive committee and the ESO writing committee. Guidelines for management of ischaemic stroke and transient ischaemic attack 2008. *Cerebrovasc Dis* 2008; 25: 457–507.
14. Steiner T, Al-Shahi Salman R, Beer R, et al. European stroke organisation (ESO) guidelines for the management of spontaneous intracerebral hemorrhage. *Int J Stroke* 2014; 9: 840–855.
15. Ntaios G, Bornstein NM, Caso V, et al.; European Stroke Organisation. The European Stroke Organisation guidelines: a standard operating procedure. *Int J Stroke* 2015; 10 Suppl A100: 128–135.
16. Guyatt GH, Alonso-Coello P, Schunemann HJ, et al. Guideline panels should seldom make good practice

- statements: guidance from the GRADE working group. *J Clin Epidemiol* 2016; 80: 3–7.
17. Higgins JPT, Thomas J, Chandler J, et al. Cochrane handbook for systematic reviews of interventions version 6.0. [www.training.cochrane.org/handbook](http://www.training.cochrane.org/handbook) (2019, accessed 21 August 2020).
  18. Turc G, Bhogal P, Fischer U, et al. European stroke organisation (ESO) – European society for minimally invasive neurological therapy (ESMINT) guidelines on mechanical thrombectomy in acute ischaemic Stroke Endorsed by stroke alliance for Europe (SAFE). *Eur Stroke J* 2019; 4: 6–12.
  19. Gioia LC, Zewude RT, Kate MP, et al. Prehospital systolic blood pressure is higher in acute stroke compared with stroke mimics. *Neurology* 2016; 86: 2146–2153.
  20. Berge E, Whiteley W, Audebert H, et al. European Stroke Organisation (ESO) guidelines on intravenous thrombolysis for acute ischaemic stroke. *Eur Stroke J* 2021; 6: I–LXII.
  21. Anderson CS, Heeley E, Huang Y, et al. Rapid blood-pressure lowering in patients with acute intracerebral hemorrhage. *N Engl J Med* 2013; 368: 2355–2365.
  22. Tsivgoulis G, Katsanos AH, Butcher KS, et al. Intensive blood pressure reduction in acute intracerebral hemorrhage: a meta-analysis. *Neurology* 2014; 83: 1523–1529.
  23. Shaw L, Price C, McLure S, et al. Paramedic initiated lisinopril for acute stroke treatment (PIL-FAST): results from the pilot randomised controlled trial. *Emerg Med J* 2014; 31: 994–999.
  24. Kobayashi A, Czlonkowska A, Ford GA, et al. European Academy of Neurology and European Stroke Organization consensus statement and practical guidance for pre-hospital management of stroke. *Eur J Neurol* 2018; 25: 425–433.
  25. Powers WJ, Rabinstein AA, Ackerson T, et al.; American Heart Association Stroke Council. 2018 Guidelines for the early management of patients with acute ischemic stroke: a guideline for healthcare professionals from the American Heart Association/American Stroke Association. *Stroke* 2018; 49: e46–e110.
  26. Ankolekar S, Fuller M, Cross I, et al. Feasibility of an ambulance-based stroke trial, and safety of glyceryl trinitrate in ultra-acute stroke: the rapid intervention with glyceryl trinitrate in hypertensive stroke trial (RIGHT, ISRCTN66434824). *Stroke* 2013; 44: 3120–3128.
  27. Bath PM, Scutt P, Anderson CS, et al. Prehospital transdermal glyceryl trinitrate in patients with ultra-acute presumed stroke (RIGHT-2): an ambulance-based, randomised, sham-controlled, blinded, phase 3 trial. *Lancet* 2019; 393: 1009–1020.
  28. Saver JL, Starkman S, Eckstein M, et al.; FAST-MAG Investigators and Coordinators. Prehospital use of magnesium sulfate as neuroprotection in acute stroke. *N Engl J Med* 2015; 372: 528–536.
  29. Bath PM, Woodhouse LJ, Krishnan K, et al. Prehospital transdermal glyceryl trinitrate for ultra-acute intracerebral hemorrhage: data from the RIGHT-2 trial. *Stroke* 2019; 50: 3064–3071.
  30. van den Berg SA, Dippel DWJ, Hofmeijer J, et al.; on behalf of the MR ASAP Investigators. Multicentre randomised trial of acute stroke treatment in the ambulance with a nitroglycerin patch (MR ASAP): study protocol for a randomised controlled trial. *Trials* 2019; 20: 06.
  31. Intensive Ambulance-delivered Blood Pressure Reduction in Hyper-Acute Stroke Trial (INTERACT4), <https://clinicaltrials.gov/ct2/show/NCT03790800> (accessed 28 February 2021).
  32. Aguiar de Sousa D, von Martial R, Abilleira S, et al. Access to and delivery of acute ischaemic stroke treatments: a survey of national scientific societies and stroke experts in 44 European countries. *Eur Stroke J* 2019; 4: 13–28.
  33. The American Nimodipine Study Group. Clinical trial of nimodipine in acute ischemic stroke. *Stroke* 1992; 23: 3–8.
  34. Barer DH, Cruickshank JM, Ebrahim SB, et al. Low dose beta blockade in acute stroke (“BEST” trial): an evaluation. *Br Med J (Clin Res Ed)* 1988; 296: 737–741.
  35. He J, Zhang Y, Xu T, et al. Effects of immediate blood pressure reduction on death and major disability in patients with acute ischemic stroke: the CATIS randomized clinical trial. *JAMA* 2014; 311: 479–489.
  36. Potter J, Mistri A, Brodie F, et al. Controlling hypertension and hypotension immediately post stroke (CHHIPS) – a randomised controlled trial. *Health Technol Assess* 2009; 13: 73.
  37. Bath PM, Woodhouse L, Scutt P, et al. ENOS trial investigators. Efficacy of nitric oxide, with or without continuing antihypertensive treatment, for management of high blood pressure in acute stroke (ENOS): a partial-factorial randomised controlled trial. *Lancet* 2015; 385: 617–628.
  38. Eveson DJ, Robinson TG, and Potter JF. Lisinopril for the treatment of hypertension within the first 24 hours of acute ischemic stroke and follow-up. *Am J Hypertens* 2007; 20: 270–277.
  39. Gelmers HJ, Gorter K, de Weerd CJ, et al. A controlled trial of nimodipine in acute ischemic stroke. *N Engl J Med* 1988; 318: 203–207.
  40. Wahlgren NG, MacMahon DG, De Keyser J, et al. Intravenous Nimodipine West European Stroke Trial (INWEST) of nimodipine in the treatment of acute ischaemic stroke. *Cerebrovasc Dis* 1994; 4: 204–210.
  41. Kaste M, Fogelholm R, Erilä T, et al. A randomized, double-blind, placebo-controlled trial of nimodipine in acute ischemic hemispheric stroke. *Stroke* 1994; 25: 1348–1353.
  42. Li Y, Zhong Z, Luo S, et al. Efficacy of antihypertensive therapy in the acute stage of cerebral infarction – a prospective, randomized control trial. *Acta Cardiol Sin* 2018; 34: 502–510.

43. Bath PM, Martin RH, Palesch Y, et al. Effect of telmisartan on functional outcome, recurrence, and blood pressure in patients with acute mild ischemic stroke: a PROFESS subgroup analysis. *Stroke* 2009; 40: 3541–3546.
44. Rashid P, Weaver C, Leonardi-Bee J, et al. The effects of transdermal glyceryl trinitrate, a nitric oxide donor, on blood pressure, cerebral and cardiac hemodynamics, and plasma nitric oxide levels in acute stroke. *J Stroke Cerebrovasc Dis* 2003; 12: 143–151.
45. Sandset EC, Bath PM, Boysen G, et al. The angiotensin-receptor blocker candesartan for treatment of acute stroke (SCAST): a randomised, placebo-controlled, double-blind trial. *Lancet* 2011; 377: 741–750.
46. Oh MS, Yu KH, Hong KS, et al.; Valsartan Efficacy on Modest Blood Pressure Reduction in Acute Ischemic Stroke (VENTURE) study group. Modest blood pressure reduction with valsartan in acute ischemic stroke: a prospective, randomized, open-label, blinded-end-point trial. *Int J Stroke* 2015; 10: 745–751.
47. Bath PM, Pathansali R, Iddenden R, et al. The effect of transdermal glyceryl trinitrate, a nitric oxide donor, on blood pressure and platelet function in acute stroke. *Cerebrovasc Dis* 2001; 11: 265–272.
48. Schrader J, Luders S, Kulschewski A, et al.; Acute Candesartan Cilexetil Therapy in Stroke Survivors Study Group. The ACCESS study: evaluation of acute candesartan cilexetil therapy in stroke survivors. *Stroke* 2003; 34: 1699–1703.
49. Fogelholm R, Palomäki H, Eirilä T, et al. Blood pressure, nimodipine, and outcome of ischemic stroke. *Acta Neurologica Scandinavica* 2004; 109: 200–204.
50. Yuan F, Yang F, Zhao J, et al. Controlling hypertension after severe cerebrovascular event (CHASE): A randomized, multicenter, controlled study. *Int J Stroke*. Epub ahead of print 11 June 2020. DOI: 10.1177/1747493020932784.
51. Potter JF, Robinson TG, Ford GA, et al. Controlling hypertension and hypotension immediately post-stroke (CHHIPS): a randomised, placebo-controlled, double-blind pilot trial. *Lancet Neurol* 2009; 8: 48–56.
52. Sandset EC, Jusufovic M, Sandset PM, et al.; SCAST Study Group. Effects of blood pressure-lowering treatment in different subtypes of acute ischemic stroke. *Stroke* 2015; 46: 877–879.
53. Ahmed N, Näsmän P, and Wahlgren NG. Effect of intravenous nimodipine on blood pressure and outcome after acute stroke. *Stroke* 2000; 31: 1250–1255.
54. Woodhouse L, Scutt P, Krishnan K, et al. Effect of hyperacute administration (within 6 hours) of transdermal glyceryl trinitrate, a nitric oxide donor, on outcome after stroke: Subgroup analysis of the efficacy of nitric oxide in stroke (ENOS) trial. *Stroke* 2015; 46: 3194–3201.
55. Jusufovic M, Sandset EC, Bath PM, et al.; Scandinavian Candesartan Acute Stroke Trial (SCAST) Study Group. Early blood pressure lowering treatment in acute stroke. Ordinal analysis of vascular events in the Scandinavian Candesartan Acute Stroke Trial (SCAST). *J Hypertens* 2016; 34: 1594–1598.
56. Ahmed N and Wahlgren NG. Effects of blood pressure lowering in the acute phase of total anterior circulation infarcts and other stroke subtypes. *Cerebrovasc Dis* 2003; 15: 235–243.
57. Jusufovic M, Sandset EC, Bath PM, et al. Effects of blood pressure lowering in patients with acute ischemic stroke and carotid artery stenosis. *Int J Stroke* 2014; 45: 3440–3442.
58. Appleton JP, Woodhouse LJ, Belcher A, et al. It is safe to use transdermal glyceryl trinitrate to lower blood pressure in patients with acute ischaemic stroke with carotid stenosis. *Stroke Vasc Neurol* 2019; 4: 28–35.
59. Haley EC Jr, Levy DE, Brott TG, et al. Urgent therapy for stroke. Part II. Pilot study of tissue plasminogen activator administered 91–180 minutes from onset. *Stroke* 1992; 23: 641–645.
60. Brott TG, Haley EC Jr, Levy DE, et al. Urgent therapy for stroke. Part I. Pilot study of tissue plasminogen activator administered within 90 minutes. *Stroke* 1992; 23: 632–640.
61. Levy DE, Brott TG, Haley EC Jr, et al. Factors related to intracranial hematoma formation in patients receiving tissue-type plasminogen activator for acute ischemic stroke. *Stroke* 1994; 25: 291–297.
62. National Institute of Neurological Disorders and Stroke rt-PA Stroke Study Group. Tissue plasminogen activator for acute ischemic stroke. *N Engl J Med* 1995; 333: 1581–1587.
63. Qureshi AI, Ezzeddine MA, Nasar A, et al. Prevalence of elevated blood pressure in 563,704 adult patients with stroke presenting to the ED in the United States. *Am J Emerg Med* 2007; 25: 32–38.
64. Tsivgoulis G, Kotsis V and Giannopoulos S. Intravenous thrombolysis for acute ischaemic stroke: effective blood pressure control matters. *Int J Stroke* 2011; 6: 125–127.
65. Castillo J, Leira R, García MM, et al. Blood pressure decrease during the acute phase of ischemic stroke is associated with brain injury and poor stroke outcome. *Stroke* 2004; 35: 520–526.
66. Oliveira-Filho J, Silva SC, Trabuco CC, et al. Detrimental effect of blood pressure reduction in the first 24 hours of acute stroke onset. *Neurology* 2003; 61: 1047–1051.
67. Tsivgoulis G, Saqqur M, Sharma VK, et al. Association of pretreatment blood pressure with tissue plasminogen activator-induced arterial recanalization in acute ischemic stroke. *Stroke* 2007; 38: 961–966.
68. Waltimo T, Haapaniemi E, Surakka IL, et al. Post-thrombolytic blood pressure and symptomatic intracerebral hemorrhage. *Eur J Neurol* 2016; 23: 1757–1762.
69. Molina CA, Alexandrov AV, Demchuk AM, et al. Improving the predictive accuracy of recanalization on stroke outcome in patients treated with tissue plasminogen activator. *Stroke* 2004; 35: 151–156.
70. Wahlgren N, Ahmed N, Eriksson N, et al. Multivariable analysis of outcome predictors and adjustment of main

- outcome results to baseline data profile in randomized controlled trials: Safe implementation of thrombolysis in Stroke-MONitoring Study (SITS-MOST). *Stroke* 2008; 39: 3316–3322.
71. Ahmed N, Wahlgren N, Brainin M, et al. Relationship of blood pressure, antihypertensive therapy, and outcome in ischemic stroke treated with intravenous thrombolysis: retrospective analysis from safe implementation of thrombolysis in Stroke-International stroke thrombolysis register (SITS-ISTR). *Stroke* 2009; 40: 2442–2449.
  72. Malhotra K, Ahmed N, Filippatou A, et al. Association of elevated blood pressure levels with outcomes in acute ischemic stroke patients treated with intravenous thrombolysis: a systematic review and meta-analysis. *J Stroke* 2019; 21: 78–90.
  73. Yong M and Kaste M. Association of characteristics of blood pressure profiles and stroke outcomes in the ECASS-II trial. *Stroke* 2008; 39: 366–372.
  74. Berge E, Cohen G, Lindley RI, et al. Effects of blood pressure and blood pressure-lowering treatment during the first 24 hours among patients in the third international stroke trial of thrombolytic treatment for acute ischemic stroke. *Stroke* 2015; 46: 3362–3369.
  75. Martin-Schild S, Halleivi H, Albright KC, et al. Aggressive blood pressure-lowering treatment before intravenous tissue plasminogen activator therapy in acute ischemic stroke. *Arch Neurol* 2008; 65: 1174–1178.
  76. Sandset EC. Blood pressure in acute stroke. *Lancet Neurol* 2014; 13: 342–343.
  77. Mundiyanapurath S, Hees K, Ahmed N, et al. Predictors of symptomatic intracranial haemorrhage in off-label thrombolysis: an analysis of the safe implementation of treatments in stroke registry. *Eur J Neurol* 2018; 25: e311–340.
  78. Tsivgoulis G, Katsanos AH, Mandava P, et al.; CLOBUST-ER Trial Investigators. Blood pressure excursions in acute ischemic stroke patients treated with intravenous thrombolysis. *J Hypertens* 2021; 39: 266–272.
  79. Tsivgoulis G, Frey JL, Flaster M, et al. Pre-tissue plasminogen activator blood pressure levels and risk of symptomatic intracerebral hemorrhage. *Stroke* 2009; 40: 3631–3634.
  80. Anderson CS, Huang Y, Lindley RI, et al. Intensive blood pressure reduction with intravenous thrombolysis therapy for acute ischaemic stroke (ENCHANTED): an international, randomised, open-label, blinded-end-point, phase 3 trial. *Lancet* 2019; 393: 877–888.
  81. Sandset EC and Fischer U. Blood pressure lowering in acute ischaemic stroke thrombolysis. *Lancet* 2019; 393: 849–850.
  82. Zhou Z, Xia C, Carcel C, et al. Intensive versus guideline-recommended blood pressure reduction in acute lacunar stroke with intravenous thrombolysis therapy: the ENCHANTED trial. *Eur J Neurol* 2021; 28: 783–793.
  83. Minhas JS, Wang X, Lindley RI, et al. Comparative effects of intensive-blood pressure versus standard-blood pressure-lowering treatment in patients with severe ischemic stroke in the ENCHANTED trial. *J Hypertens* 2021; 39: 280–285.
  84. Bath PM, Woodhouse L, Krishnan K, et al. Effect of treatment delay, stroke type, and thrombolysis on the effect of glyceryl trinitrate, a nitric oxide donor, on outcome after acute stroke: a systematic review and meta-analysis of individual patient from randomised trials. *Stroke Res Treat* 2016; 2016: 9706720.
  85. Goyal M, Menon BK, van Zwam WH, et al. Endovascular thrombectomy after large-vessel ischaemic stroke: a meta-analysis of individual patient data from five randomised trials. *Lancet* 2016; 387: 1723–1731.
  86. Katsanos AH, Malhotra K, Goyal N, et al. Mortality Risk in acute ischemic stroke patients with large vessel occlusion treated with mechanical thrombectomy. *J Am Heart Assoc* 2019; 8: e014425.
  87. Campbell BCV, Majoie C, Albers GW, et al.; HERMES orators. Penumbra imaging and functional outcome in patients with anterior circulation ischaemic stroke treated with endovascular thrombectomy versus medical therapy: a meta-analysis of individual patient-level data. *Lancet Neurol* 2019; 18: 46–55.
  88. Liebeskind DS, Bracard S, Guillemin F, et al.; HERMES Collaborators. eTICI reperfusion: defining success in endovascular stroke therapy. *J Neurointerv Surg* 2019; 11: 433–438.
  89. Fischer U and Mattle HP. Blood pressure in acute stroke: still no answer for management. *Stroke* 2017; 48: 1717–1719.
  90. Talke PO, Sharma D, Heyer EJ, et al. Society for neuroscience in anesthesiology and critical care expert consensus statement: anesthetic management of endovascular treatment for acute ischemic stroke\*: endorsed by the society of NeuroInterventional surgery and the neurocritical care society. *J Neurosurg Anesthesiol* 2014; 26: 95–108.
  91. Malhotra K, Goyal N, Katsanos AH, et al. Association of blood pressure with outcomes in acute stroke thrombectomy. *Hypertension* 2020; 75: 730–739.
  92. Goyal N, Tsivgoulis G, Iftikhar S, et al. Admission systolic blood pressure and outcomes in large vessel occlusion strokes treated with endovascular treatment. *J Neurointerv Surg* 2017; 9: 451–454.
  93. Mulder M, Ergezen S, Lingsma HF, et al.; Multicenter Randomized Clinical Trial of Endovascular Treatment of Acute Ischemic Stroke in the Netherlands (MR CLEAN) Investigators. Baseline blood pressure effect on the benefit and safety of intra-arterial treatment in MR CLEAN (multicenter randomized clinical trial of endovascular treatment of acute ischemic stroke in The Netherlands). *Stroke* 2017; 48: 1869–1876.
  94. Maier B, Gory B, Taylor G, et al.; the Endovascular Treatment in Ischemic Stroke (ETIS) Research Investigators. Mortality and disability according to baseline blood pressure in acute ischemic stroke patients treated by thrombectomy: a collaborative pooled analysis. *Jaha* 2017; 6: 10–12.



95. Petersen NH, Ortega-Gutierrez S, Wang A, et al. Decreases in blood pressure during thrombectomy are associated with larger infarct volumes and worse functional outcome. *Stroke* 2019; 50: 1797–1804.
96. Rasmussen M, Schöenberger S, Henden PL, et al.; SAGA orators. Blood pressure thresholds and neurologic outcomes after endovascular therapy for acute ischemic stroke: an analysis of individual patient data from 3 randomized clinical trials. *JAMA Neurol* 2020; 77: 622–631.
97. Valent A, Sajadhoussen A, Maier B, et al. A 10% blood pressure drop from baseline during mechanical thrombectomy for stroke is strongly associated with worse neurological outcomes. *J Neurointerv Surg* 2020; 12: 363–369.
98. Lowhagen Henden P, Rentzos A, Karlsson JE, et al. Hypotension during endovascular treatment of ischemic stroke is a risk factor for poor neurological outcome. *Stroke* 2015; 46: 2678–2680.
99. Whalin MK, Halenda KM, Haussen DC, et al. Even small decreases in blood pressure during conscious sedation affect clinical outcome after stroke thrombectomy: an analysis of hemodynamic thresholds. *AJNR Am J Neuroradiol* 2017; 38: 294–298.
100. Maier B, Fahed R, Khoury N, et al. Association of blood pressure during thrombectomy for acute ischemic stroke with functional outcome: a systematic review. *Stroke* 2019; 50: 2805–2812.
101. Goyal N, Tsivgoulis G, Pandhi A, et al. Blood pressure levels post mechanical thrombectomy and outcomes in large vessel occlusion strokes. *Neurology* 2017; 89: 540–547.
102. Goyal N, Tsivgoulis G, Pandhi A, et al. Blood pressure levels post mechanical thrombectomy and outcomes in non-recanalized large vessel occlusion patients. *J Neurointerv Surg* 2018; 10: 925–931.
103. Mistry EA, Mistry AM, Nakawah MO, et al. Systolic blood pressure within 24 hours after thrombectomy for acute ischemic stroke correlates with outcome. *J Am Heart Assoc* 2017; 6: e00616.
104. Matusevicius M, Cooray C, Bottai M, et al. Blood pressure after endovascular thrombectomy: modeling for outcomes based on recanalization status. *Stroke* 2020; 51: 519–525.
105. Mistry EA, Mehta T, Mistry A, et al. Blood pressure variability and neurologic outcome after endovascular thrombectomy: a secondary analysis of the BEST study. *Stroke* 2020; 51: 511–518.
106. Deng C, Campbell D, Diprose W, et al. A pilot randomised controlled trial of the management of systolic blood pressure during endovascular thrombectomy for acute ischaemic stroke. *Anaesthesia* 2020; 75: 739–746.
107. Individualized Blood Pressure Management During Endovascular Stroke Treatment (INDIVIDUATE), <https://clinicaltrials.gov/ct2/show/NCT04578288> (accessed 2 January 2021).
108. Effect of Individualized Versus Standard Bp Management During MT for Anterior Ischemic Stroke (DETERMINE), <https://clinicaltrials.gov/ct2/show/NCT04352296> (accessed 16 March 2021).
109. Blood Pressure After Endovascular Stroke Therapy-II (BEST-II), <https://clinicaltrials.gov/ct2/show/NCT04116112> (accessed 2 January 2021).
110. Second Enhanced Control of Hypertension and Thrombectomy Stroke Study (ENCHANTED2) (ENCHANTED2), <https://clinicaltrials.gov/ct2/show/NCT04140110> (accessed 2 January 2021).
111. Blood Pressure Management in Stroke Following Endovascular Treatment (DETECT), <https://clinicaltrials.gov/ct2/show/NCT04484350>. (accessed 2 January 2021).
112. Outcome in Patients Treated With Intraarterial Thrombectomy – optIMAL Blood Pressure Control (OPTIMAL-BP), <https://clinicaltrials.gov/ct2/show/NCT04205305>. (accessed 16 March 2021).
113. Mazighi M, Richard S, Lapergue B, et al. Safety and efficacy of intensive blood pressure lowering after successful endovascular therapy in acute ischaemic stroke (BP-TARGET): a multicentre, open-label, randomised controlled trial. *Lancet Neurology* 2021; 20: 265–274.
114. Mazighi M, Labreuche J, Richard S, et al. Blood pressure target in acute stroke to reduce Hemorrhage after endovascular therapy: the randomized BP TARGET study protocol. *Front Neurol* 2020; 11: 480–407.
115. Goyal M, Demchuk AM, Menon BK, et al. Randomized assessment of rapid endovascular treatment of ischemic stroke. *N Engl J Med* 2015; 372: 1019–1030.
116. Nogueira RG, Jadhav AP, Haussen DC, et al. Thrombectomy 6 to 24 hours after stroke with a mismatch between deficit and infarct. *N Engl J Med* 2018; 378: 11–21.
117. Schonenberger S, Uhlmann L, Hacke W, et al. Effect of conscious sedation vs general anesthesia on early neurological improvement among patients with ischemic stroke undergoing endovascular thrombectomy: a randomized clinical trial. *JAMA* 2016; 316: 1986–1996.
118. Lowhagen Henden P, Rentzos A, Karlsson JE, et al. General anesthesia versus conscious sedation for endovascular treatment of acute ischemic stroke: the AnStroke trial (anesthesia during stroke). *Stroke* 2017; 48: 1601–1607.
119. Simonsen CZ, Yoo AJ, Sorensen LH, et al. Effect of general anesthesia and conscious sedation during endovascular therapy on infarct growth and clinical outcomes in acute ischemic stroke: a randomized clinical trial. *JAMA Neurol* 2018; 75: 470–477.
120. Mattle HP, Kappeler L, Arnold M, et al. Blood pressure and vessel recanalization in the first hours after ischemic stroke. *Stroke* 2005; 36: 264–268.
121. John S, Hazaa W, Uchino K, et al. Timeline of blood pressure changes after intra-arterial therapy for acute ischemic stroke based on recanalization status. *J Neurointerv Surg* 2017; 9: 455–458.
122. Martins AI, Sargento-Freitas J, Silva F, et al. Recanalization modulates association between blood

- pressure and functional outcome in acute ischemic stroke. *Stroke* 2016; 47: 1571–1576.
123. Anadani M, Arthur AS, Alawieh A, et al. Blood pressure reduction and outcome after endovascular therapy with successful reperfusion: a multicenter study. *J NeuroInterv Surg* 2020; 12: 932–936.
  124. Alawieh A, Chalhoub R, Korson CJ, et al. Impact of reperfusion pump power on technical and clinical outcomes after direct aspiration thrombectomy (ADAPT). *J Neurointerv Surg* 2020; 12: 579–584.
  125. Carvalho Dias M, Gabriel D, Saraiva M, et al. Spontaneous systolic blood pressure drop early after mechanical thrombectomy predicts dramatic neurological recovery in ischaemic stroke patients. *Eur Stroke J* 2020; 5: 362–369.
  126. Rubiera M, Cava L, Tsvigoulis G, et al. Diagnostic criteria and yield of real-time transcranial Doppler monitoring of intra-arterial reperfusion procedures. *Stroke* 2010; 41: 695–699.
  127. Kneihsl M, Niederkorn K, Deutschmann H, et al. Increased Middle cerebral artery mean blood flow velocity index after stroke thrombectomy indicates increased risk for intracranial hemorrhage. *J NeuroInterv Surg* 2018; 10: 882–887.
  128. Reinhard M, Wihler C, Roth M, et al. Cerebral autoregulation dynamics in acute ischemic stroke after rtPA thrombolysis. *Cerebrovasc Dis* 2008; 26: 147–155.
  129. Petersen NH, Silverman A, Strander SM, et al. Fixed compared with autoregulation-oriented blood pressure thresholds after mechanical thrombectomy for ischemic stroke. *Stroke* 2020; 51: 914–921.
  130. Bang OY, Chung JW, Kim SK, et al. Therapeutic-induced hypertension in patients with noncardioembolic acute stroke. *Neurology* 2019; 93: e1955–e1963.
  131. Hillis AE, Ulatowski JA, Barker PB, et al. A pilot randomized trial of induced blood pressure elevation: effects on function and focal perfusion in acute and sub-acute stroke. *Cerebrovasc Dis* 2003; 16: 236–246.
  132. Nasi LA, Martins SCO, Gus M, et al. Early manipulation of arterial blood pressure in acute ischemic stroke (MAPAS): results of a randomized controlled trial. *Neurocrit Care* 2019; 30: 372–379.
  133. Saqqur M, Sharma VK, Tsvigoulis G, et al. Real-time hemodynamic assessment of downstream effects of intracranial stenoses in patients with orthostatic hypoperfusion syndrome. *Cerebrovasc Dis* 2010; 30: 355–361.
  134. Rordorf G, Cramer SC, Efid JT, et al. Pharmacological elevation of blood pressure in acute stroke. Clinical effects and safety. *Stroke* 1997; 28: 2133–2138.
  135. Rordorf G, Koroshetz WJ, Ezzeddine MA, et al. A pilot study of drug-induced hypertension for treatment of acute stroke. *Neurology* 2001; 56: 1210–1213.
  136. Lim TS, Hong JM, Lee JS, et al. Induced-hypertension in progressing lacunar infarction. *J Neurol Sci* 2011; 308: 72–76.
  137. Kang MJ, Yang JW, Lee YB, et al. The role of phenylephrine in patients with small deep subcortical infarct and progressive weakness. *J Neurol Sci* 2017; 377: 107–111.
  138. Robinson TG, Potter JF, Ford GA, et al. Effects of antihypertensive treatment after acute stroke in the continue or stop post-stroke antihypertensives collaborative study (COSSACS): a prospective, randomised, open, blinded-endpoint trial. *Lancet Neurol* 2010; 9: 767–775.
  139. Woodhouse LJ, Manning L, Potter JF, et al.; Blood Pressure in Acute Stroke Collaboration. Continuing or temporarily stopping prestroke antihypertensive medication in acute stroke: an individual patient data meta-analysis. *Hypertension* 2017; 69: 933–941.
  140. Al-Shahi Salman R, Frantzas J, Lee RJ, et al. Absolute risk and predictors of the growth of acute spontaneous intracerebral haemorrhage: a systematic review and meta-analysis of individual patient data. *The Lancet Neurology* 2018; 17: 885–894.
  141. Anderson CS, Huang Y, Wang JG, et al. Intensive blood pressure reduction in acute cerebral haemorrhage trial (INTERACT): a randomised pilot trial. *Lancet Neurol* 2008; 7: 391–399.
  142. Qureshi AI, Palesch YY, Barsan WG, et al. Intensive blood-pressure lowering in patients with acute cerebral hemorrhage. *N Engl J Med* 2016; 375: 1033–1043.
  143. Li Q, Warren AD, Qureshi AI, et al. Ultra-early blood pressure reduction attenuates hematoma growth and improves outcome in intracerebral hemorrhage. *Ann Neurol* 2020; 88: 388–395.
  144. Krishnan K, Scutt P, Woodhouse L, et al. Glyceryl trinitrate for acute intracerebral hemorrhage: results from the efficacy of nitric oxide in stroke (ENOS) trial, a subgroup analysis. *Stroke* 2016; 47: 44–52.
  145. Gupta S, Abbot AK, Srinath R, et al. Randomized trial to assess safety and clinical efficacy of intensive blood pressure reduction in acute spontaneous intracerebral haemorrhage. *Med J Armed Forces India* 2018; 74: 120–125.
  146. Koch S, Romano JG, Forteza AM, et al. Rapid blood pressure reduction in acute intracerebral hemorrhage: feasibility and safety. *Neurocrit Care* 2008; 8: 316–321.
  147. Jusufovic M, Sandset EC, Bath PM, et al.; Scandinavian Candesartan Acute Stroke Trial Study Group. Blood pressure-lowering treatment with candesartan in patients with acute hemorrhagic stroke. *Stroke* 2014; 45: 3440–3442.
  148. Butcher K, Jeerakathil T, Emery D, et al. The intracerebral haemorrhage acutely decreasing arterial pressure trial: ICH ADAPT. *Int J Stroke* 2010; 5: 227–233.
  149. Butcher KS, Jeerakathil T, Hill M, et al. The intracerebral haemorrhage acutely decreasing arterial pressure trial. *Stroke* 2013; 44: 620–626.
  150. Zheng J, Li H, Lin S, et al. Perioperative antihypertensive treatment in patients with spontaneous intracerebral hemorrhage. *Stroke* 2017; 48: 216–218.
  151. Burgess LG, Goyal N, Jones GM, et al. Evaluation of acute kidney injury and mortality after intensive blood pressure control in patients with intracerebral hemorrhage. *J Am Heart Assoc* 2018; 7: e008439.

152. Graffagnino C, Bergese S, Love J, et al. Clevidipine rapidly and safely reduces blood pressure in acute intracerebral hemorrhage: the ACCELERATE trial. *Cerebrovasc Dis* 2013; 36: 173–180.
153. Demchuk AM, Dowlathshahi D, Rodriguez-Luna D, et al. Prediction of haematoma growth and outcome in patients with intracerebral haemorrhage using the CT-angiography spot sign (PREDICT): a prospective observational study. *Lancet Neurol* 2012; 11: 307–314.
154. Brouwers HB, Goldstein JN, Romero JM, et al. Clinical applications of the computed tomography angiography spot sign in acute intracerebral hemorrhage: a review. *Stroke* 2012; 43: 3427–3432.
155. Goldstein JN, Fazen LE, Snider R, et al. Contrast extravasation on CT angiography predicts hematoma expansion in intracerebral hemorrhage. *Neurology* 2007; 68: 889–894.
156. Morotti A, Brouwers HB, Romero JM, et al.; for the Antihypertensive Treatment of Acute Cerebral Hemorrhage II and Neurological Emergencies Treatment Trials Investigators. Intensive blood pressure reduction and spot sign in intracerebral hemorrhage: a secondary analysis of a randomized clinical trial. *JAMA Neurol* 2017; 74: 950–960.
157. Krishnan K, Scutt P, Woodhouse L, et al. Continuing versus stopping prestroke antihypertensive therapy in acute intracerebral hemorrhage: a subgroup analysis of the efficacy of nitric oxide in stroke trial. *J Stroke Cerebrovasc Dis* 2016; 25: 1017–1026.